



# Ezi-Flow CSV4 Passive Pressure Clamp

## Operating Instructions

Follow these instructions when operating the  
Ezi-Flow CSV4 Passive Pressure Clamp System



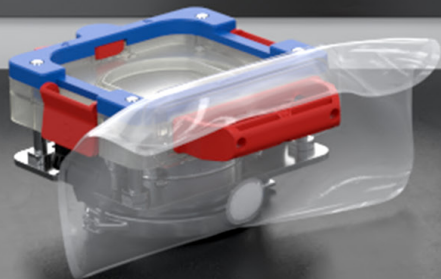
VERSION 1.0  
DATE PRODUCED 04/03/22

# 1

- During this procedure
- you will need:

- 1 Ezi-Flow CSV4 Active
- 2 Chargebag Support Stand
- 3 Ezi-Flow CSV4 Passive Pressure Clamp
- 4 Any Ezi-Dock flexible with Ezi-Flow CSV4 Passive connection
- 5 (Optional) Padlocks

1



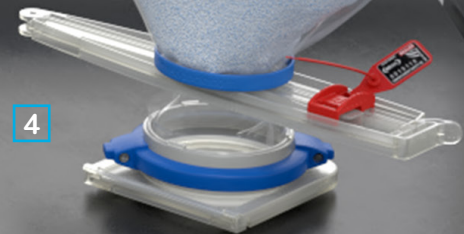
2



3

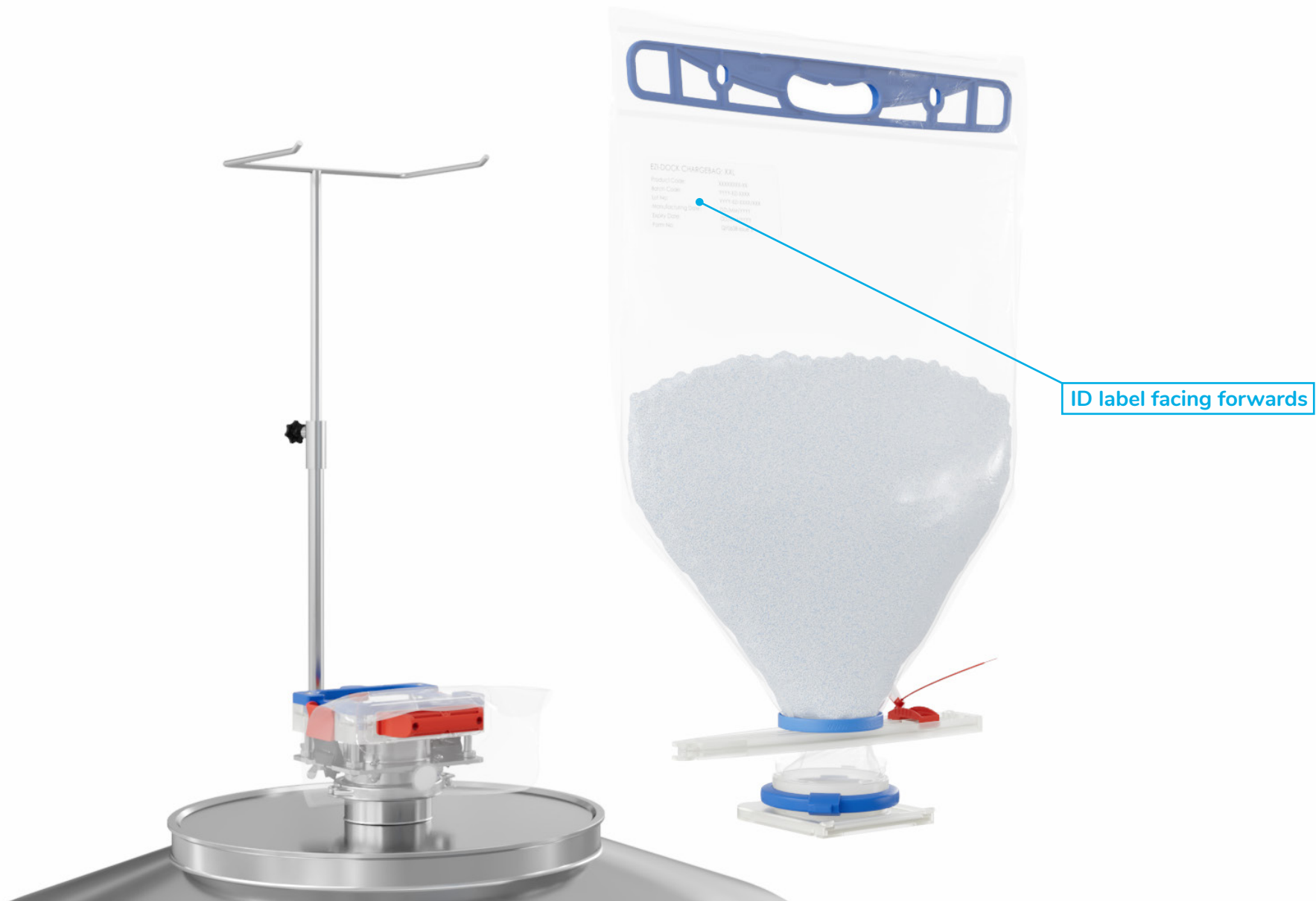


4



5





# 2:

First, carefully load the filled chargebag, with its Ezi-Grip Single-use bag clamp & tamper evident security tag in place, onto the support stand, with the ID label facing forwards.

EZI-DOCK SYSTEMS LTD  
Ezi-Flow CSV4  
Passive Pressure Clamp



# 3:

The chargebag handle has holes to support the bag evenly. At this point, the chargebag should be loaded onto the support stand, with the passive still undocked.

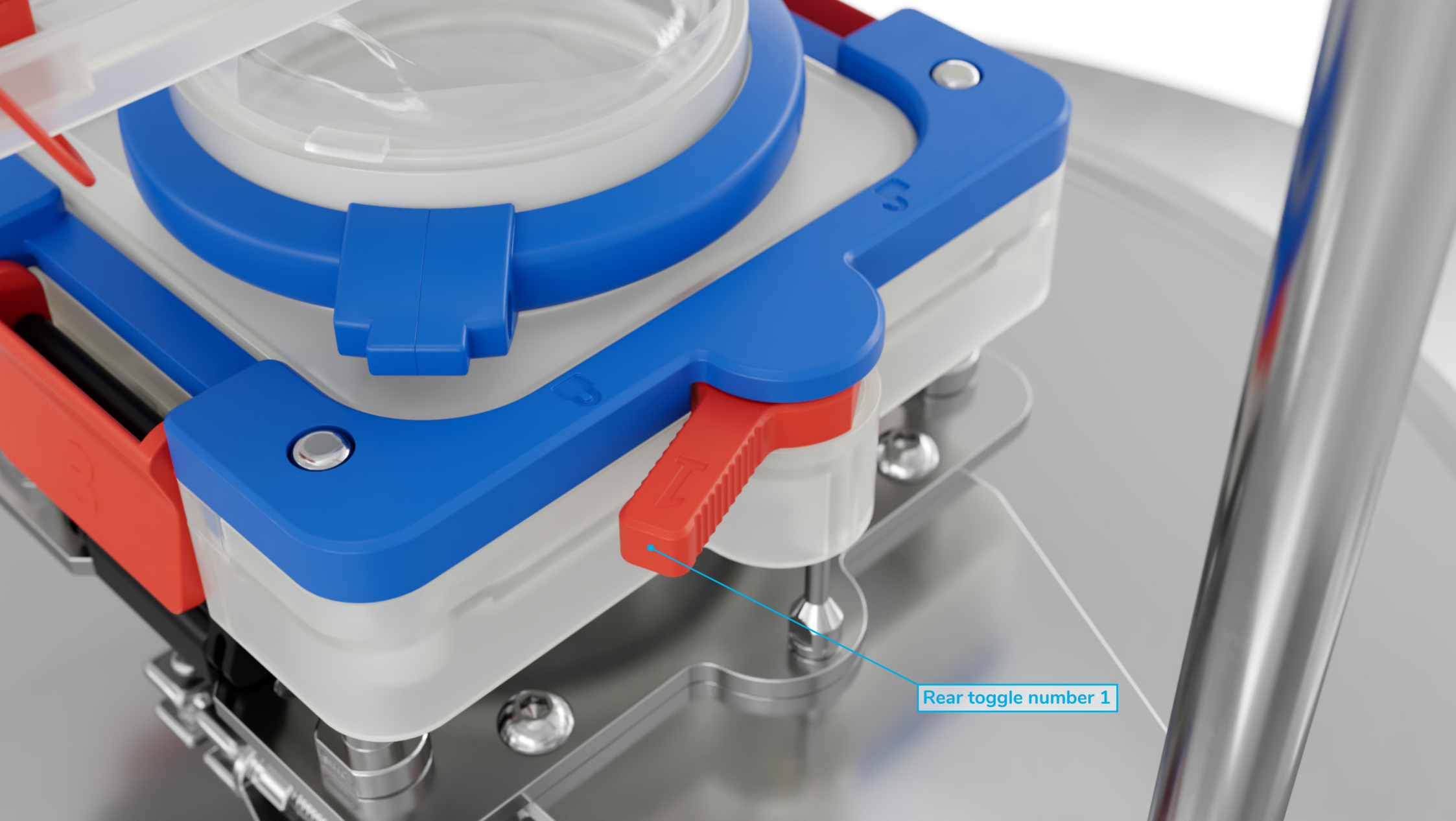
EZI-DOCK SYSTEMS LTD  
Ezi-Flow CSV4  
Passive Pressure Clamp



4:

Next, insert the front of the passive under the lip of the active, and then push the rear of the passive down flat.

EZI-DOCK SYSTEMS LTD  
Ezi-Flow CSV4  
Passive Pressure Clamp

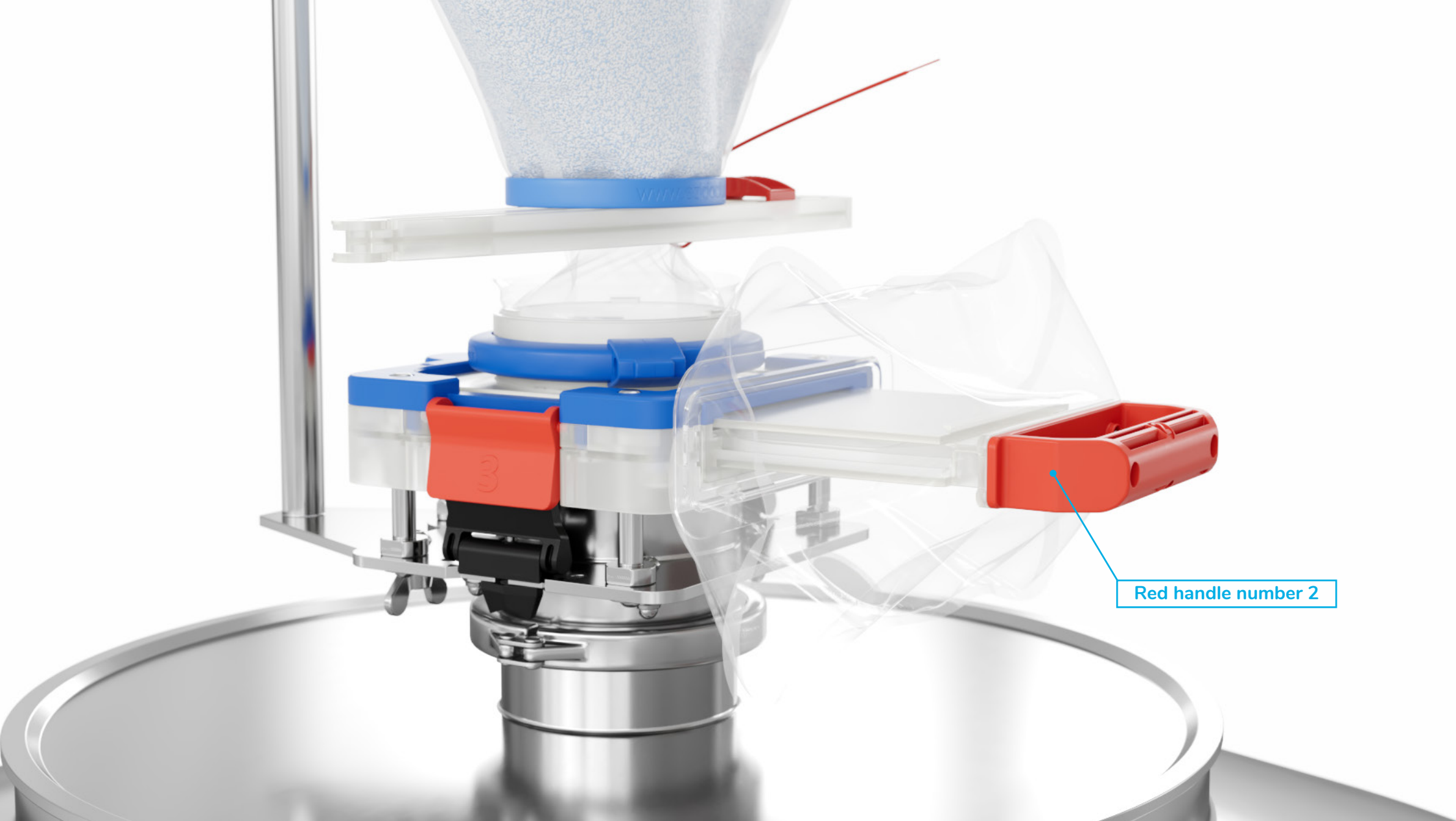


Rear toggle number 1

# 5:

Now, the rear toggle, marked number 1 on the CSV Active, can be fully turned to release the interlocks.

EZI-DOCK SYSTEMS LTD  
Ezi-Flow CSV4  
Passive Pressure Clamp



6:

The next operation is to pull out the red handle marked number 2. This removes the active and passive sliders.

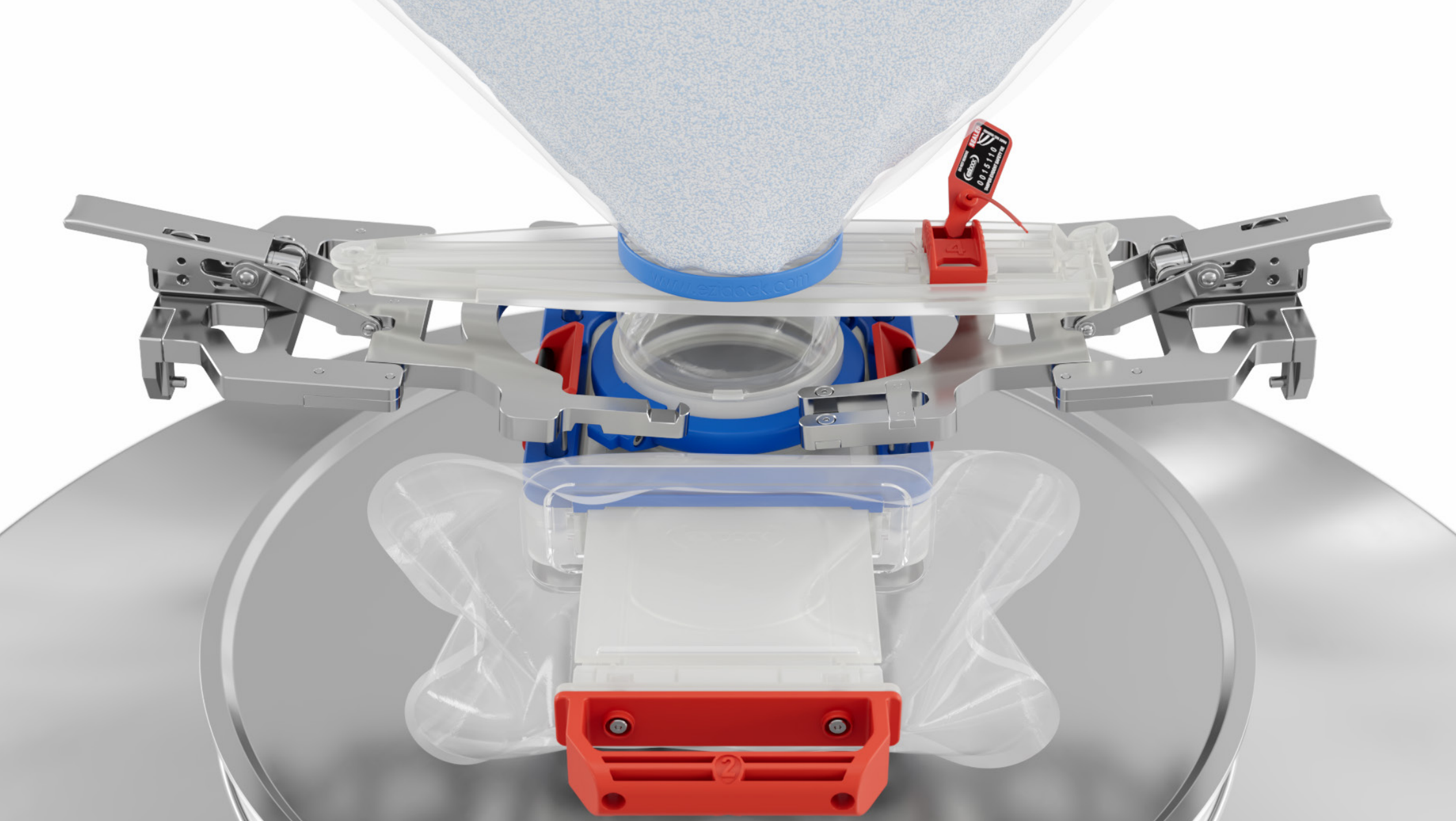
EZI-DOCK SYSTEMS LTD  
Ezi-Flow CSV4  
Passive Pressure Clamp



7:

The removal of the two sliders has left a void in the system, which the next operation deals with. Fully raising the two red side toggles, marked number 3, removes this void, by lowering the active cassette onto the active spigot and creating a contained seal.

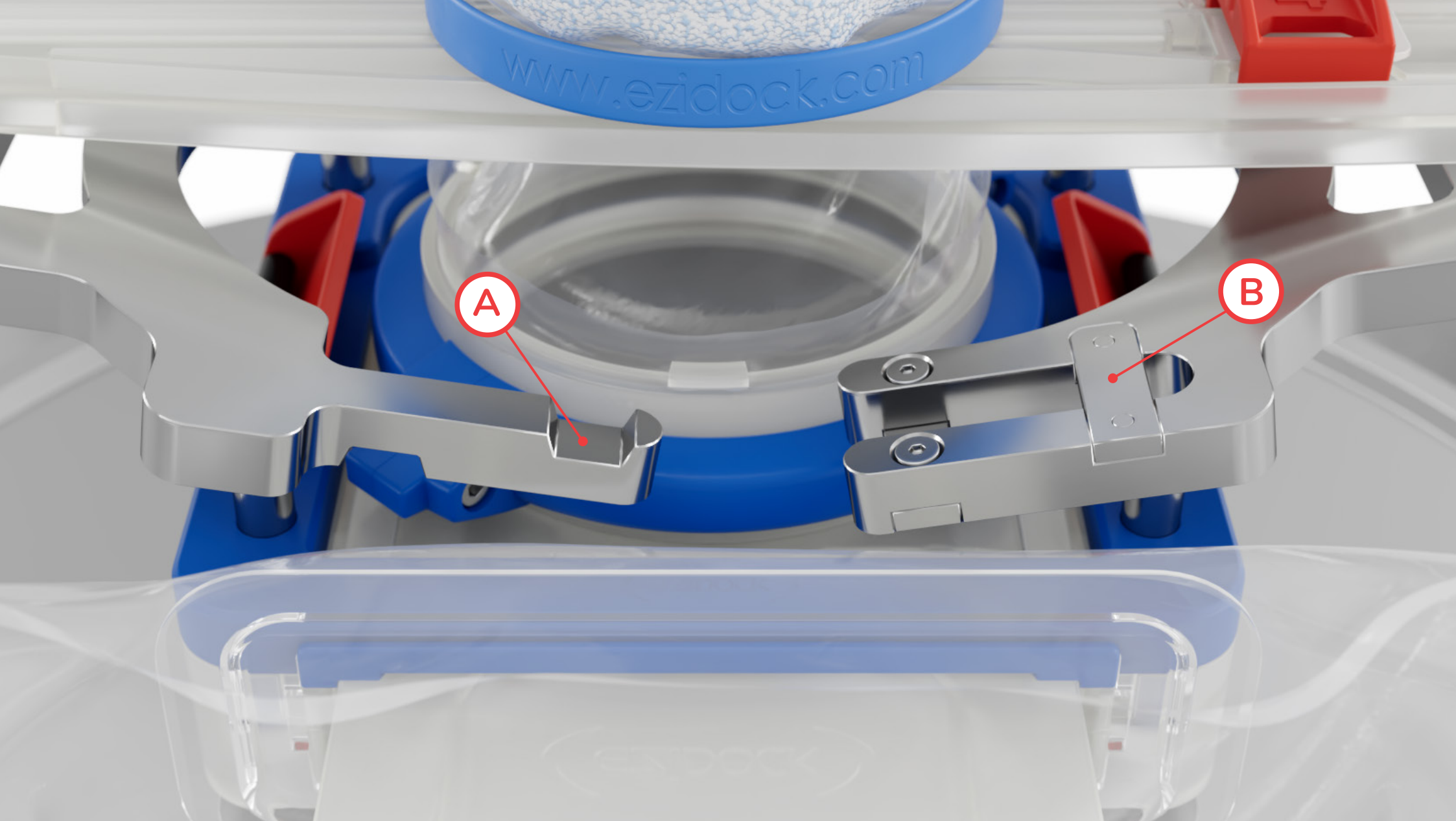
EZI-DOCK SYSTEMS LTD  
Ezi-Flow CSV4  
Passive Pressure Clamp



8:

Position each pressure clamp plate half between the Ezi-Grip single use bag clamp and the CSV4 passive connection

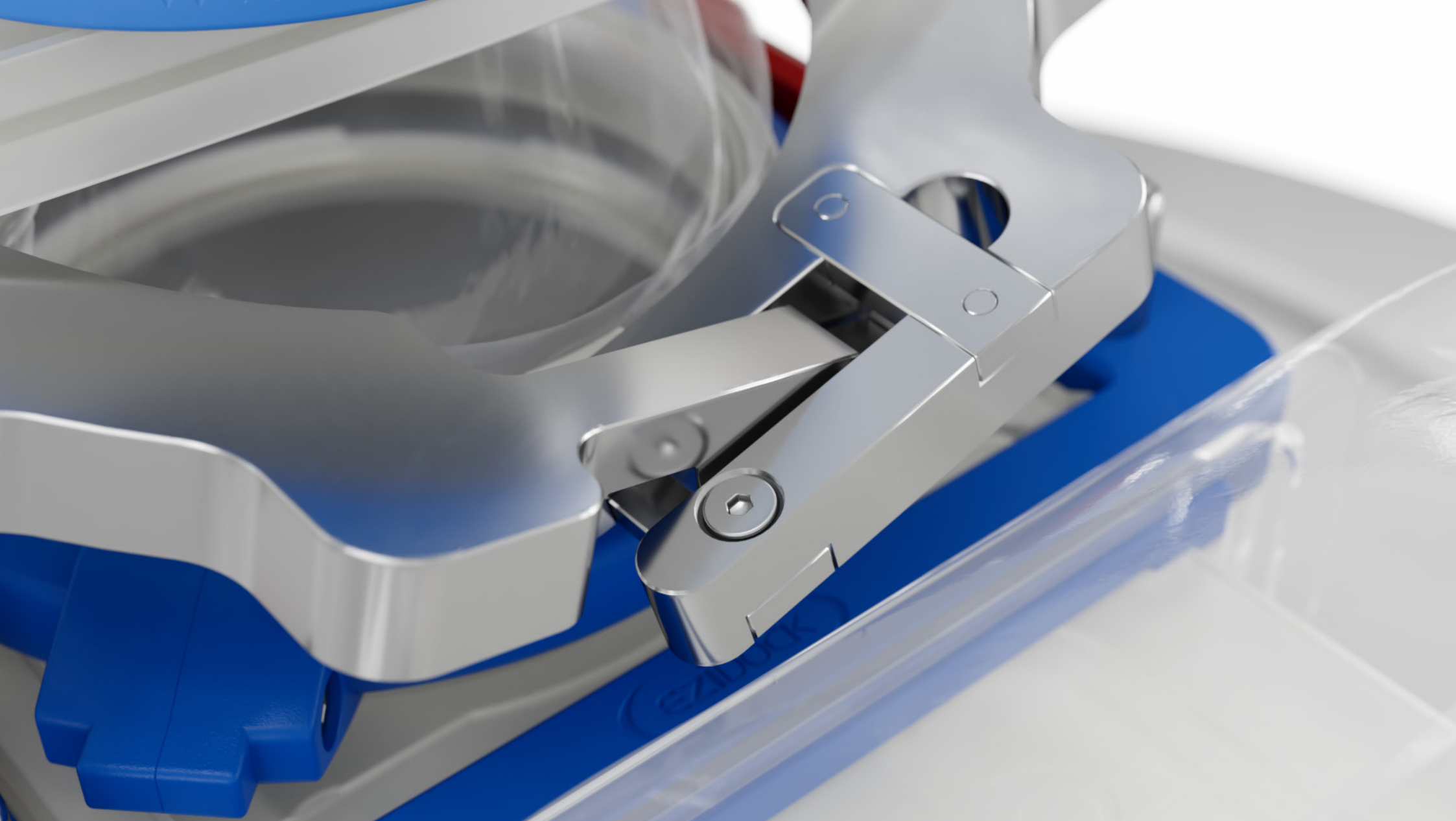
EZI-DOCK SYSTEMS LTD  
Ezi-Flow CSV4  
Passive Pressure Clamp



9:

Hold the clamps so that the hooks (A) are correctly aligned with the interlock features (B).

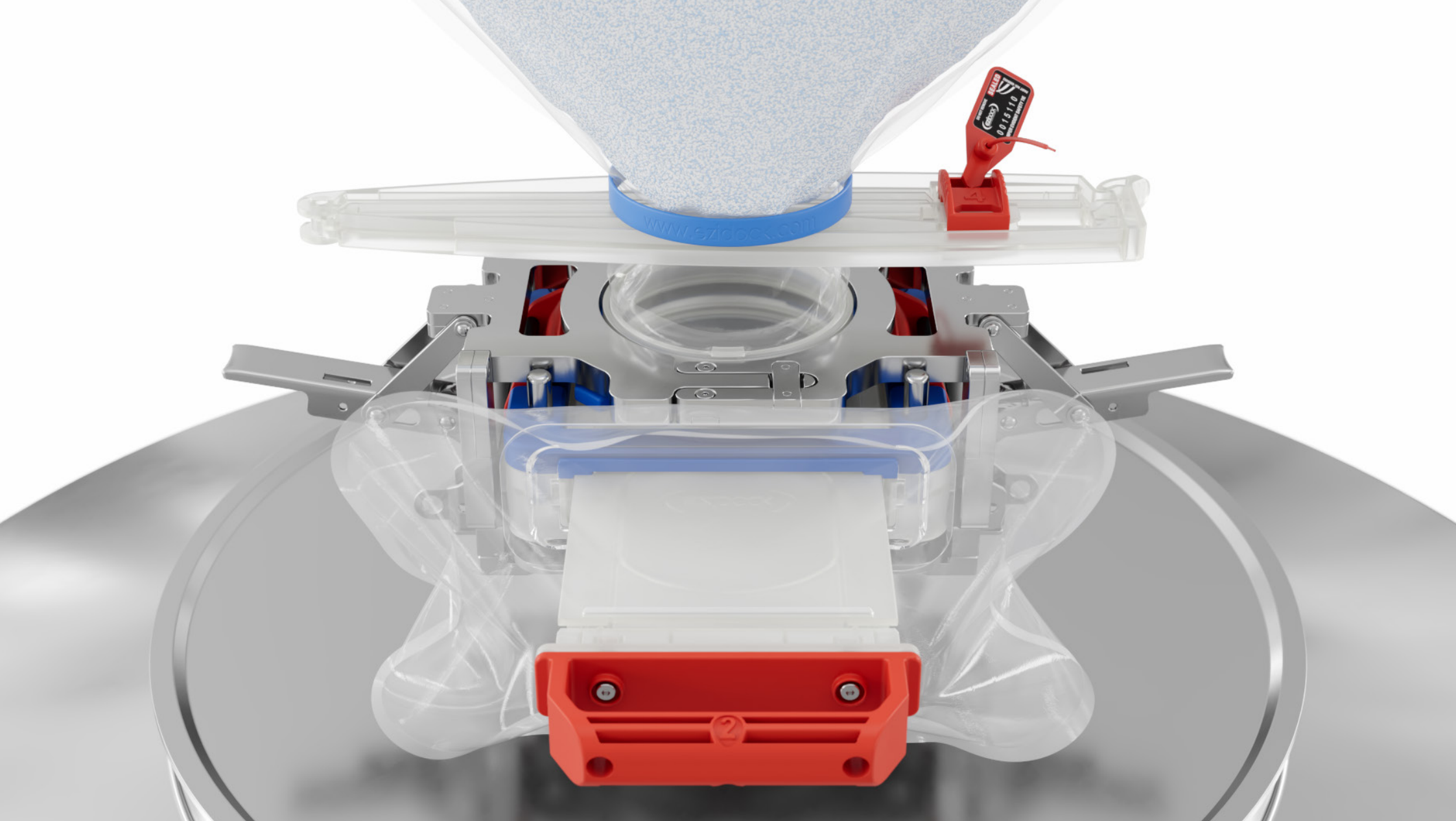
EZI-DOCK SYSTEMS LTD  
Ezi-Flow CSV4  
Passive Pressure Clamp



# 10:

Manipulate each clamp so that the hooks engage with the corresponding interlock features on the front and rear of the assembly.

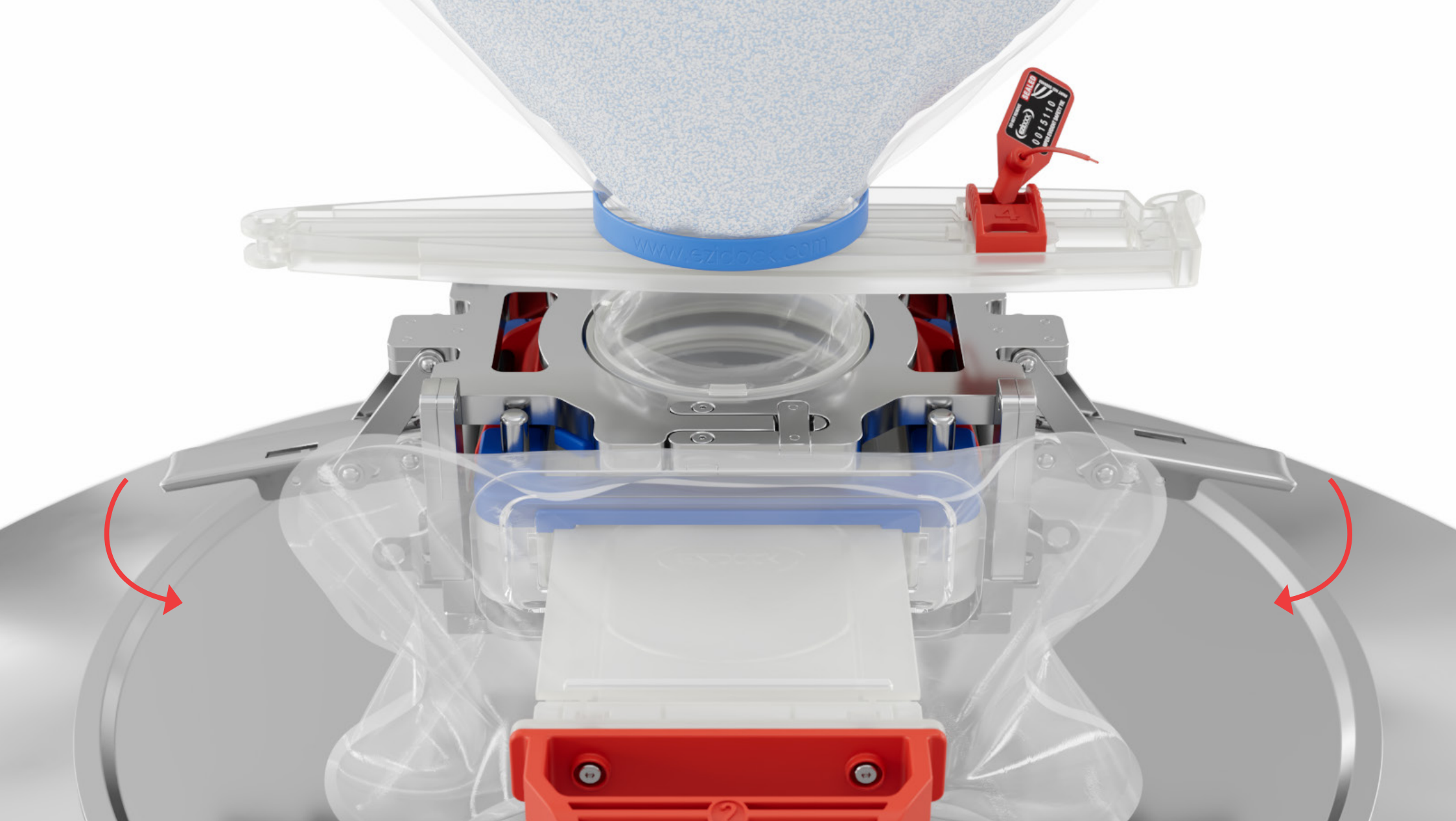
EZI-DOCK SYSTEMS LTD  
Ezi-Flow CSV4  
Passive Pressure Clamp



# 11:


Lower each clamp half to fully engage the interlock features. Centralise the clamp assembly on the Ezi-Flow chargebag.

EZI-DOCK SYSTEMS LTD  
Ezi-Flow CSV4  
Passive Pressure Clamp

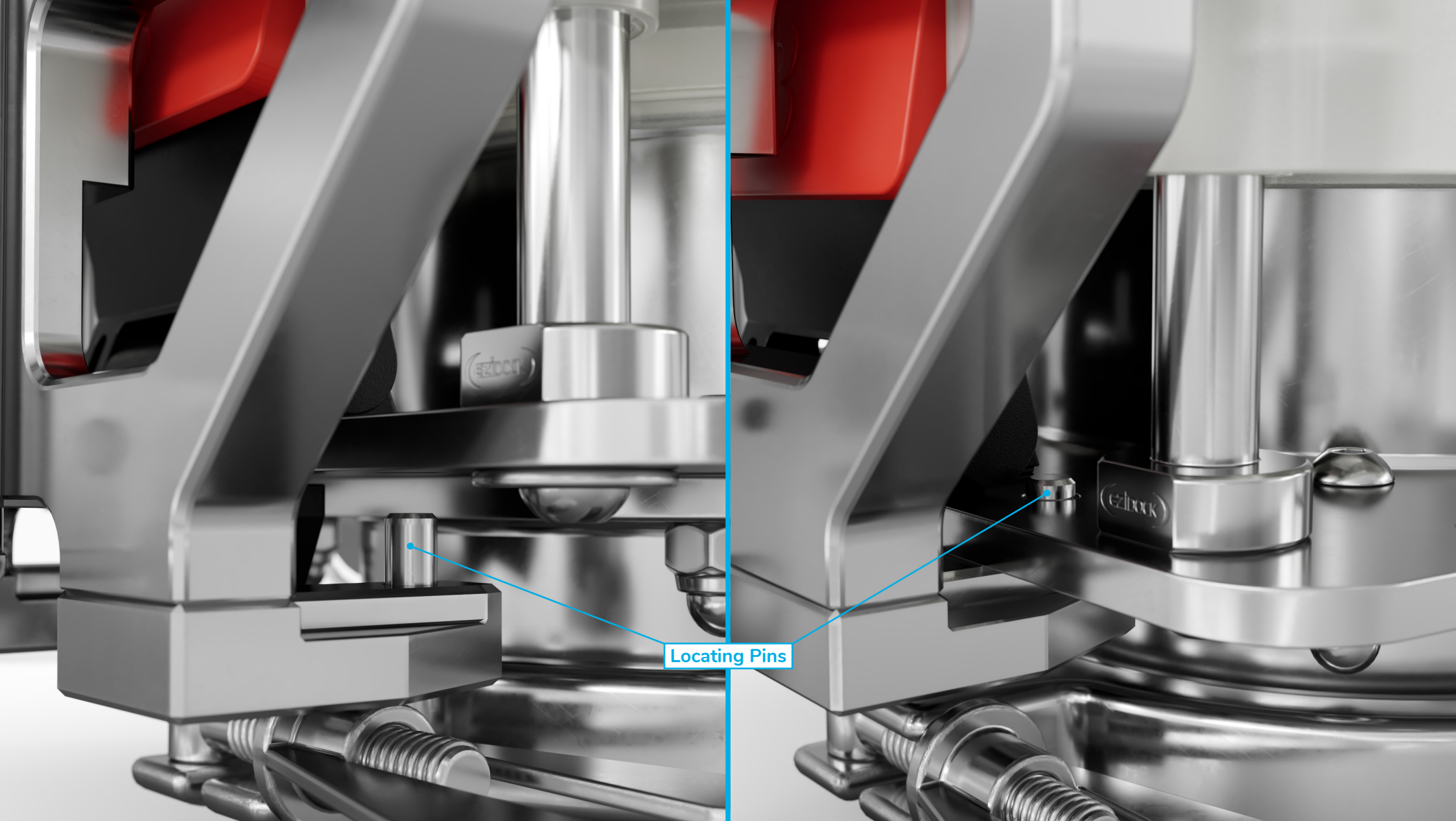


# 12:

Lower the pressure clamp side plate toggles simultaneously to evenly distribute pressure and compress the CSV4 passive together

 The Ezi-Flow CSV4 passive pressure clamp has been factory set and will be deliberately tight

EZI-DOCK SYSTEMS LTD  
Ezi-Flow CSV4  
Passive Pressure Clamp

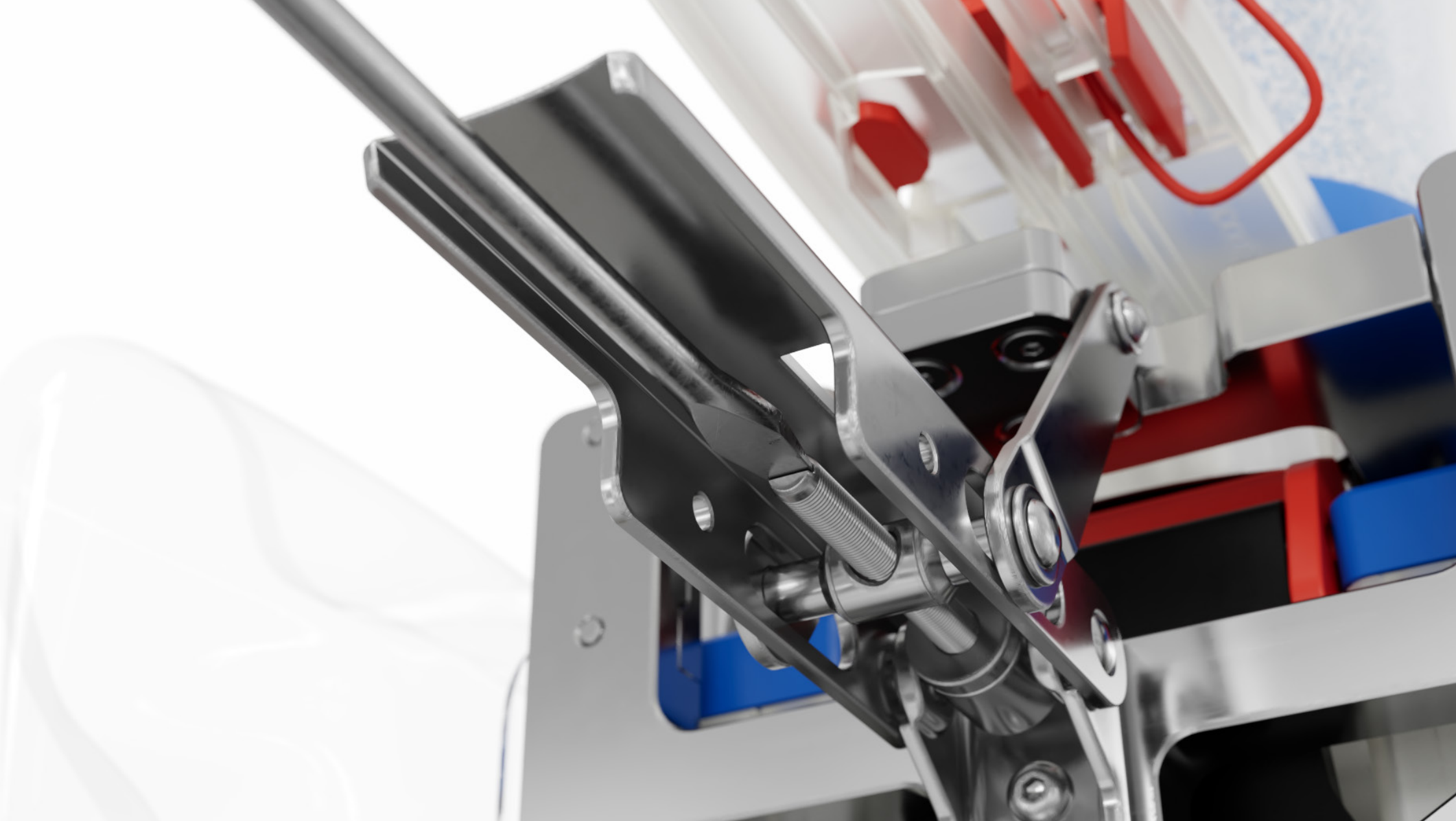


Locating Pins


# 13:

Align the location pegs on each clamp half with the holes (x4) on the Ezi-Flow CSV4 mounting plate.

EZI-DOCK SYSTEMS LTD  
Ezi-Flow CSV4  
Passive Pressure Clamp



# 14:

 If necessary, the clamps on both sides can be adjusted with a flat bladed screwdriver as shown. Do not adjust without first consulting the Ezi-Dock technical team.

EZI-DOCK SYSTEMS LTD  
Ezi-Flow CSV4  
Passive Pressure Clamp



15:

Clamp correctly positioned and system ready for product transfer.

EZI-DOCK SYSTEMS LTD  
Ezi-Flow CSV4  
Passive Pressure Clamp



# 16:

Padlocks can be inserted through the side plate toggle rings to prevent tamper and/or accidental release. (Optional)

EZI-DOCK SYSTEMS LTD  
Ezi-Flow CSV4  
Passive Pressure Clamp

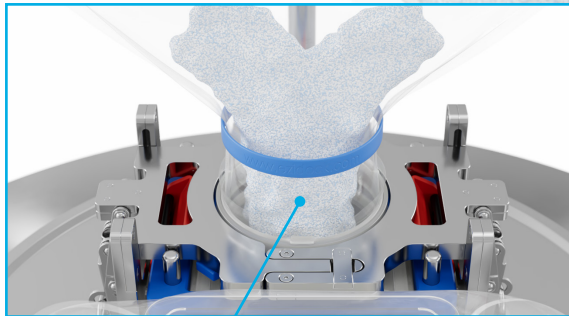


The Red Tamper Evident Security tag must then be removed.

**⚠ The bag clamp must not be removed until the Ezi-Flow CSV4 Passive Pressure Clamp has been correctly fitted. Doing so could flood the system and cause a failure in the containment performance.**

EZI-DOCK SYSTEMS LTD  
Ezi-Flow CSV4  
Passive Pressure Clamp

17:

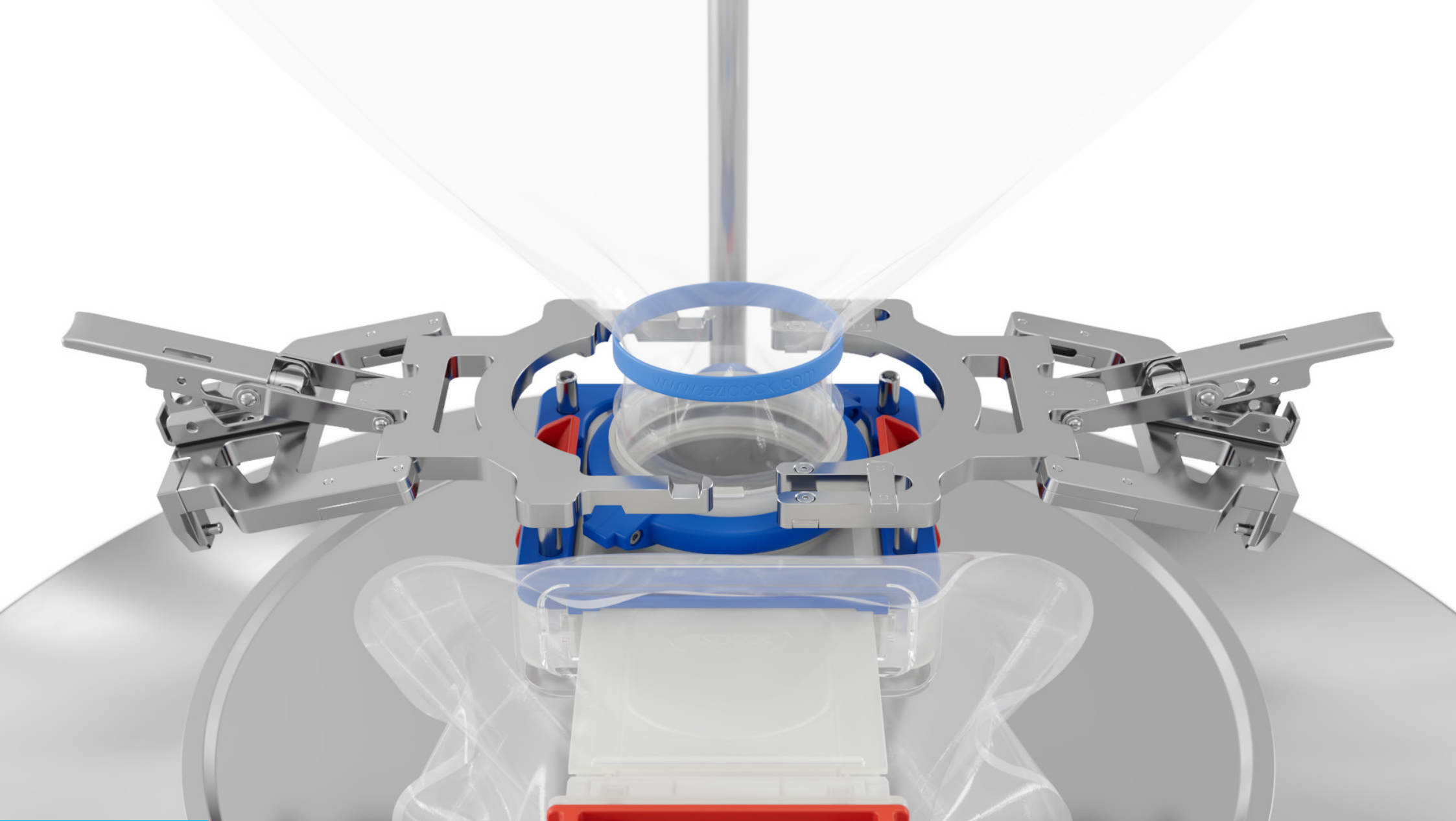


Product flows freely

# 18:

The bag clamp on the chargebag, marked as Number 4, should now be removed to allow product to flow freely through the full-bore aperture.

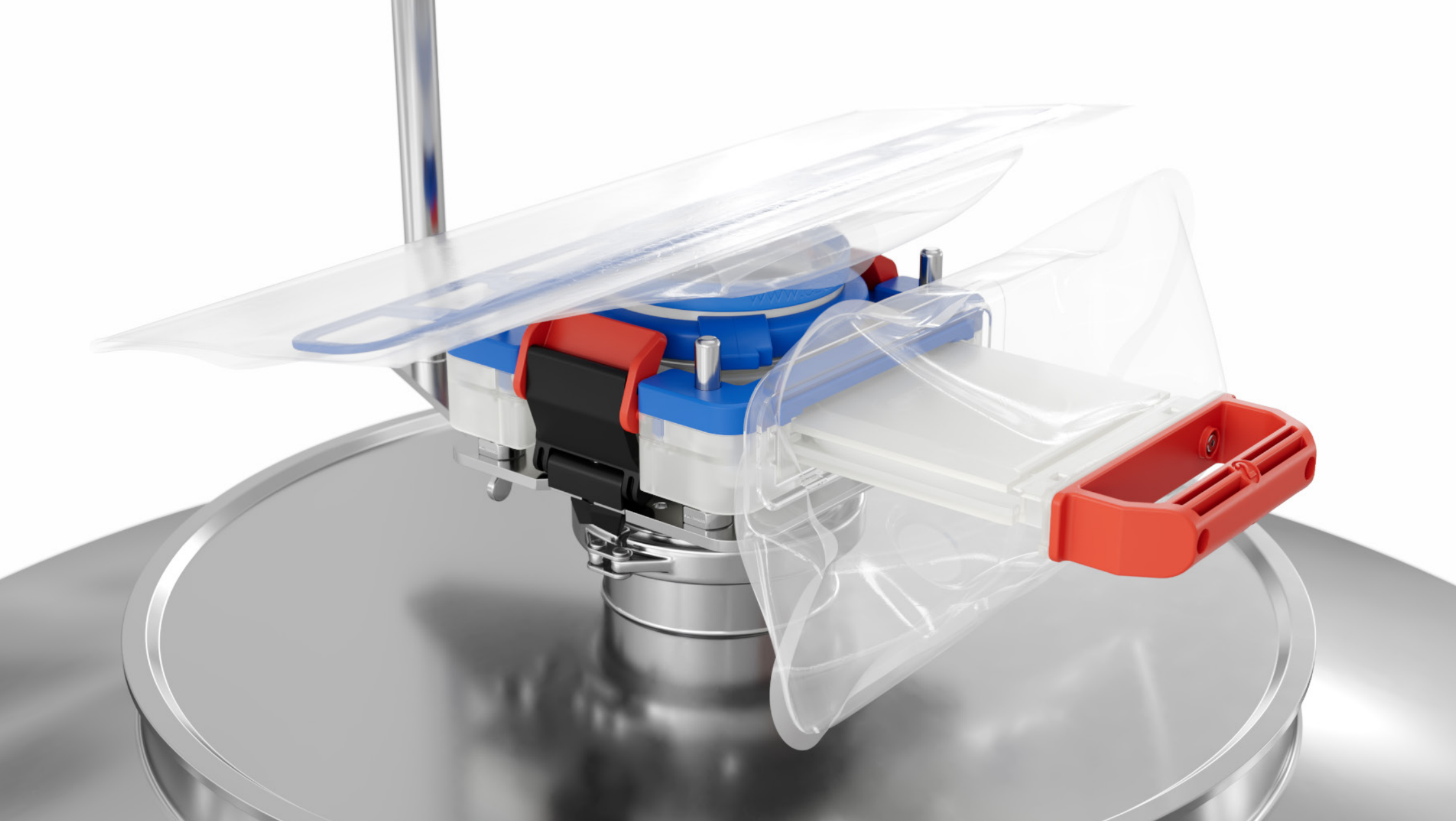
EZI-DOCK SYSTEMS LTD  
Ezi-Flow CSV4  
Passive Pressure Clamp



19:

To remove the Ezi-Flow CSV4 Passive Pressure Clamp simply reverse the operating steps.

EZI-DOCK SYSTEMS LTD  
Ezi-Flow CSV4  
Passive Pressure Clamp



# 20:

Before removing the chargebag, first manipulate it to ensure any residual materials are fully discharged. Then, fold down the chargebag prior to removal. You then simply reverse the docking process.

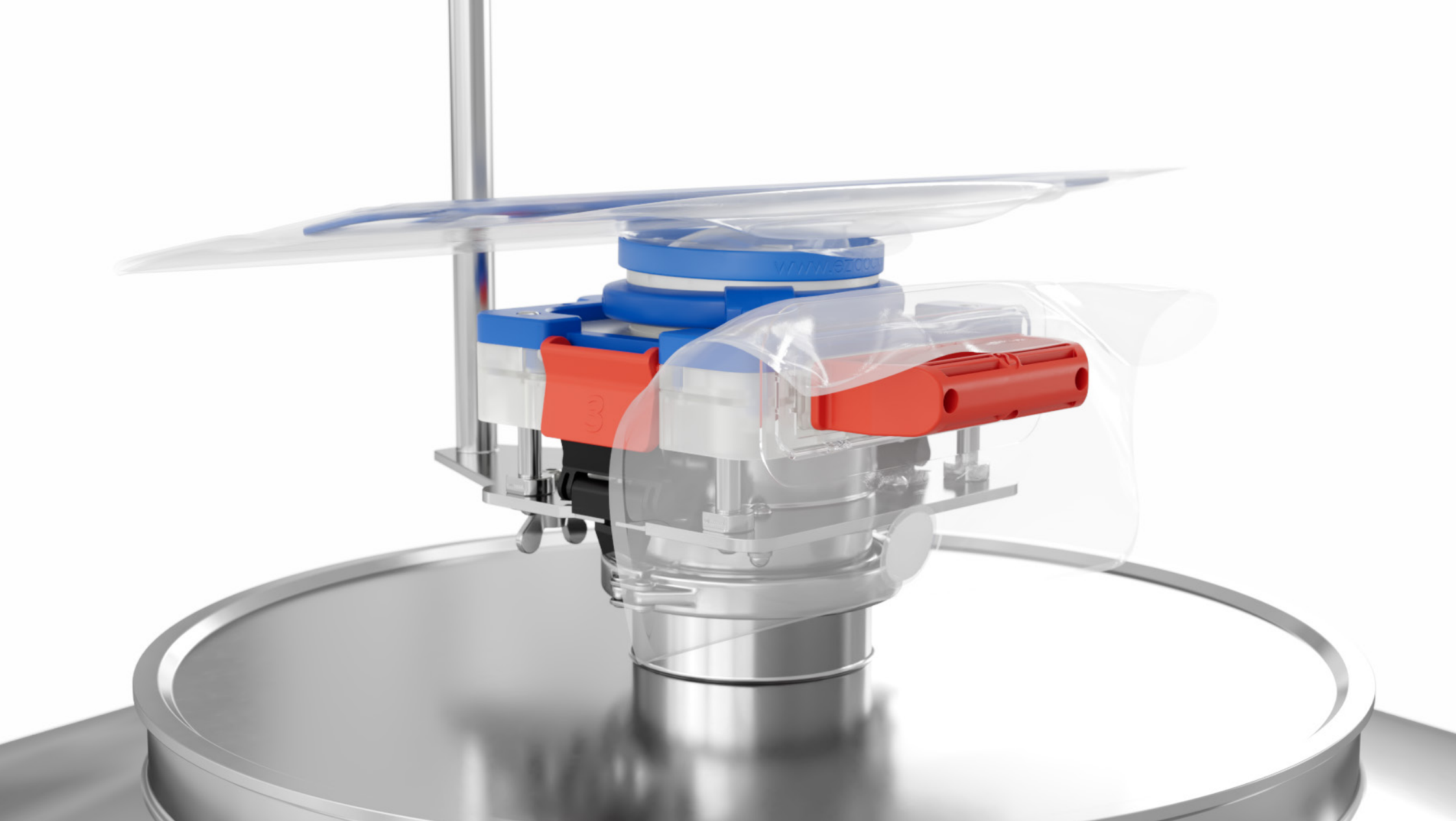
EZI-DOCK SYSTEMS LTD  
Ezi-Flow CSV4  
Passive Pressure Clamp



21:

Lower the red side toggles, marked number 3.

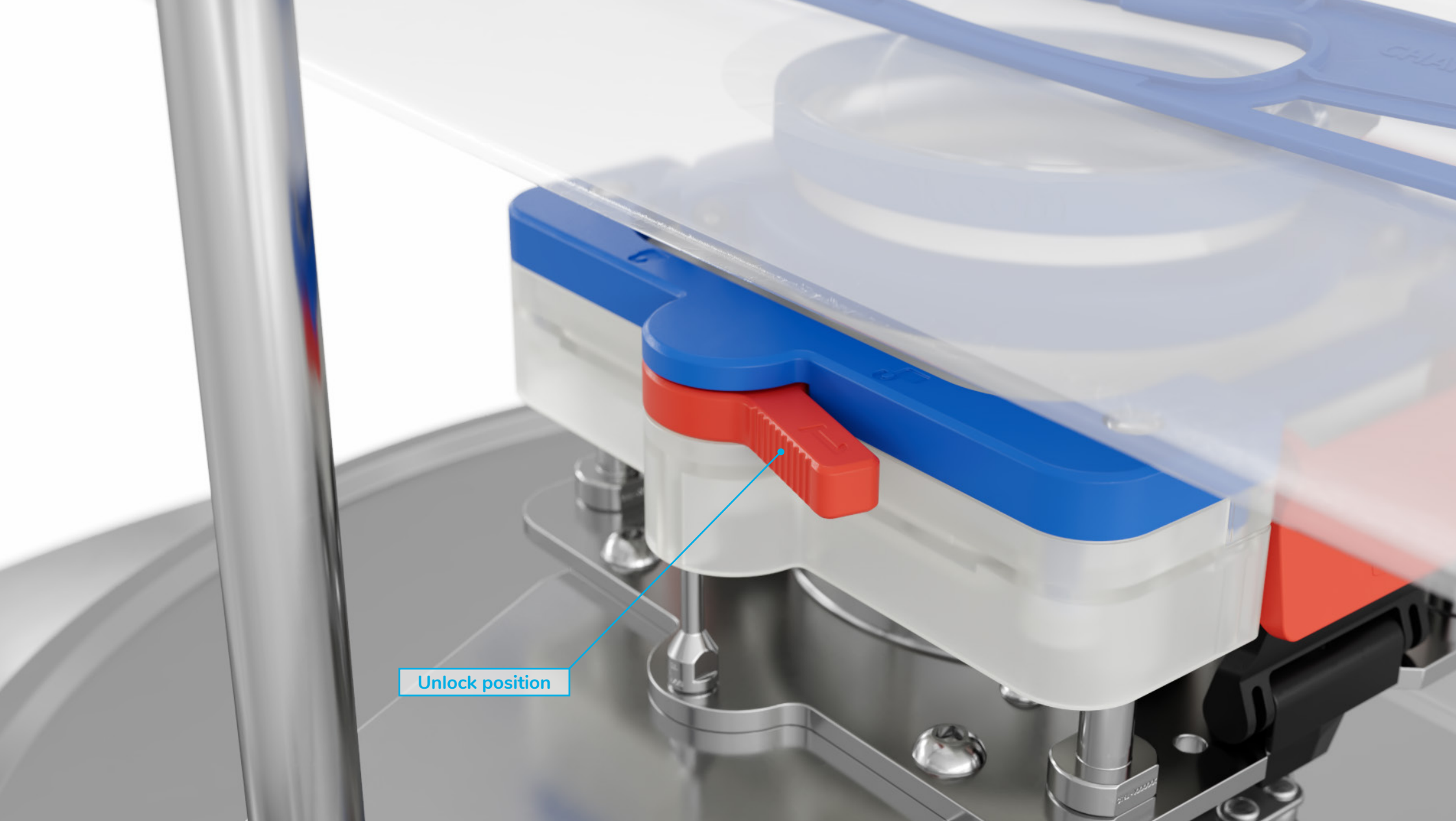
EZI-DOCK SYSTEMS LTD  
Ezi-Flow CSV4  
Passive Pressure Clamp



22:

Push back the front red handle, marked number 2.

EZI-DOCK SYSTEMS LTD  
Ezi-Flow CSV4  
Passive Pressure Clamp



# 23:

Fully turn the rear red toggle, marked number 1, to its unlock position.

EZI-DOCK SYSTEMS LTD  
Ezi-Flow CSV4  
Passive Pressure Clamp



24:

Now the Chargebag can be lifted clear of the active and bagged for safe disposal.

EZI-DOCK SYSTEMS LTD  
Ezi-Flow CSV4  
Passive Pressure Clamp



THE QUEEN'S AWARDS  
FOR ENTERPRISE:  
INNOVATION  
2014



THE QUEEN'S AWARDS  
FOR ENTERPRISE:  
INNOVATION  
2015



THE QUEEN'S AWARDS  
FOR ENTERPRISE:  
INNOVATION  
2019

## **Ezi-Dock Systems Limited**

Park Court, Park Lane Business Park, Kirkby in Ashfield,  
Notts NG17 9GU United Kingdom

 Tel: **+ 44 (0) 1623 888 000**

 Email: **[sales@ezidock.com](mailto:sales@ezidock.com)**

 Web: **[www.ezidock.com](http://www.ezidock.com)**