



Ezi-Flow CSV4 Pressure Clamp

Operating Instructions

Follow these instructions when operating
the Ezi-Flow CSV4 Pressure Clamp System

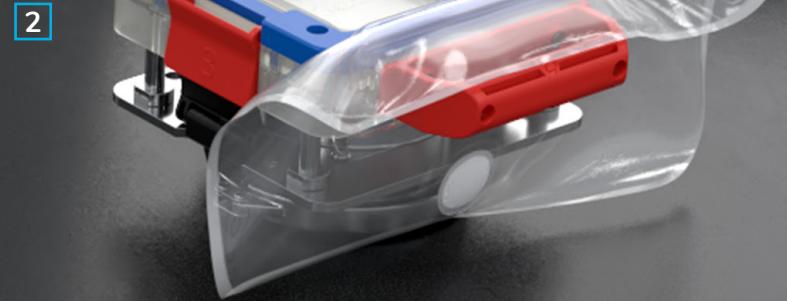


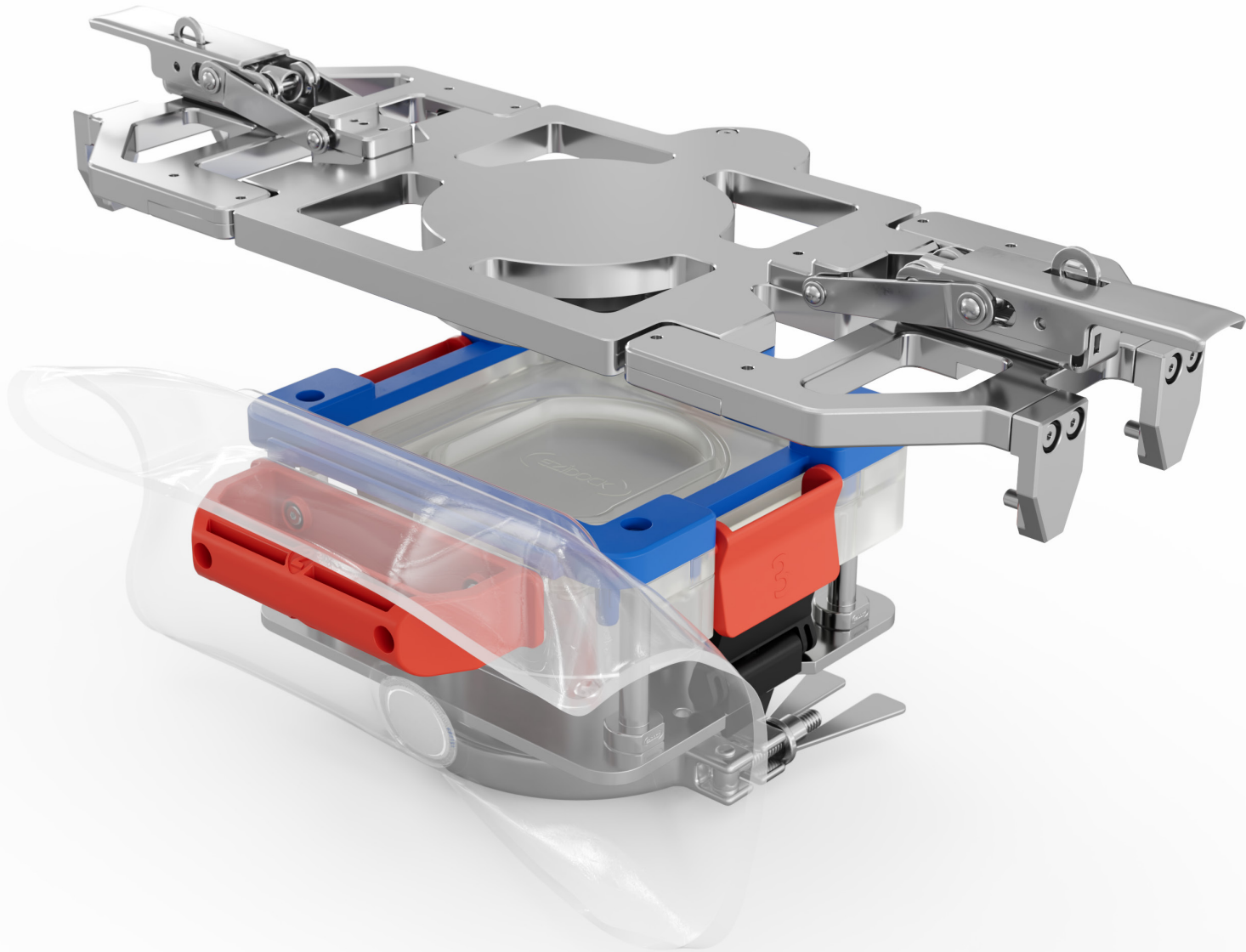
VERSION 1.0
DATE PRODUCED 04/03/22

1

- During this procedure
- you will need:


- 1 Ezi-Flow CSV4 Pressure Clamp
- 2 Ezi-Flow CSV4 Active
- 3 (Optional) Padlocks



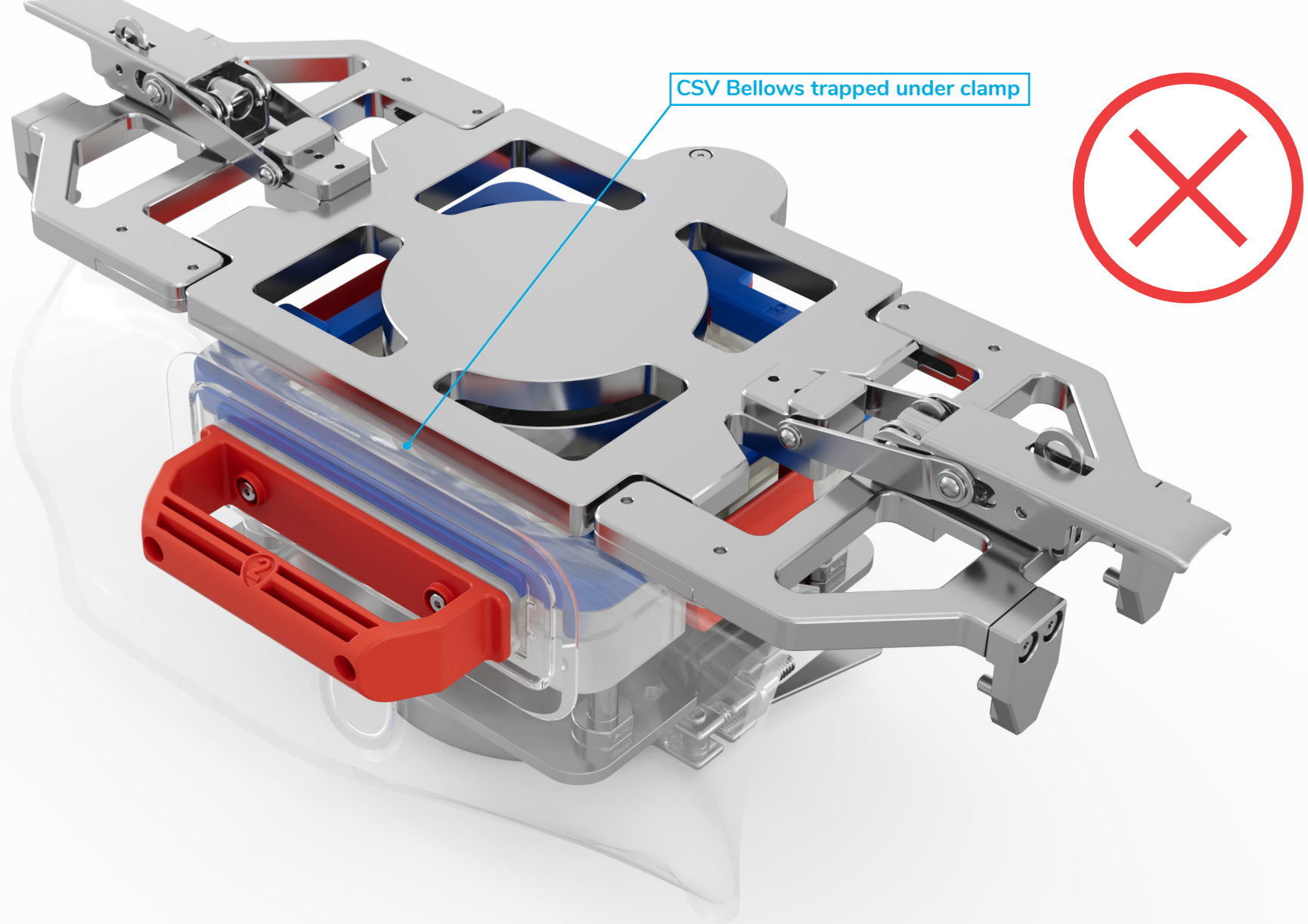


2:

Holding the pressure clamp (top plate, and side plates) Parallel to the top of the CSV4 Active and with the dowel positioned to the rear, gently lower it onto the CSV4 Active.

 Do not lower the pressure clamp onto the CSV4 Active without the side plates being parallel to the active cassette

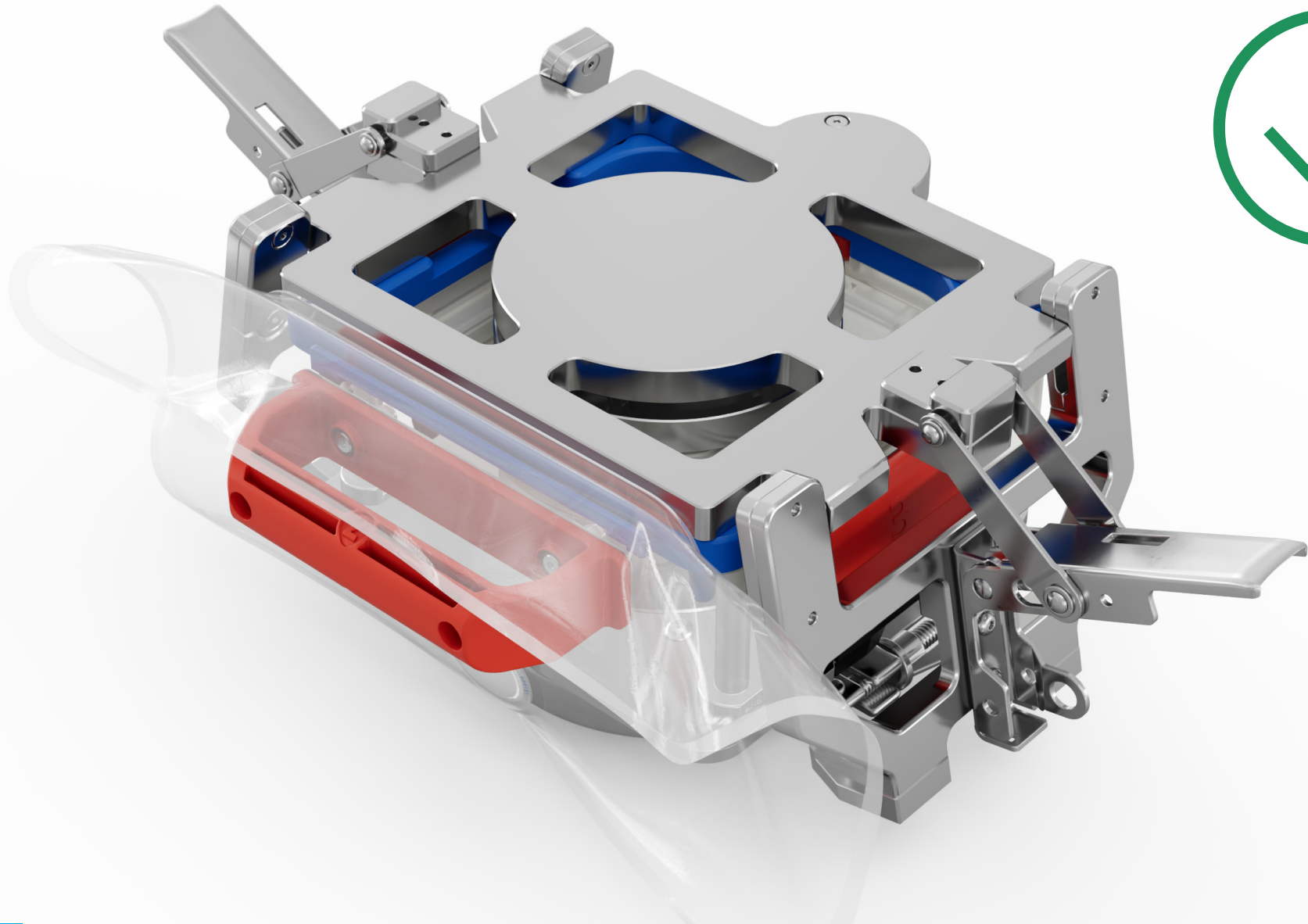
EZI-DOCK SYSTEMS LTD
Ezi-Flow CSV4
Pressure Clamp



2A:

Ensure the top of the bellows does not become trapped under the pressure clamp

EZI-DOCK SYSTEMS LTD
Ezi-Flow CSV4
Pressure Clamp



2B:

Bellows shown in correct position over red handle number 2.

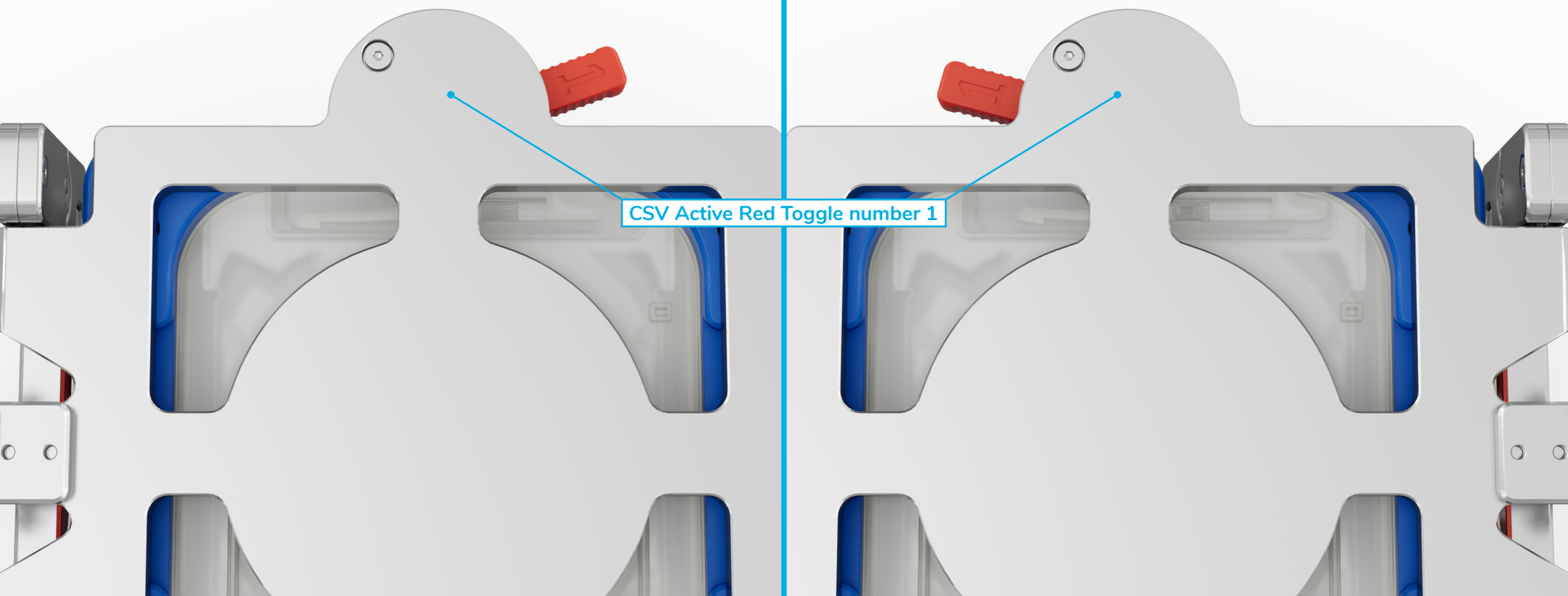
EZI-DOCK SYSTEMS LTD
Ezi-Flow CSV4
Pressure Clamp



3:


Once the top plate is resting on the active cassette, release the toggles and lower the side plates, into a resting position at 90° to the top plate (DO NOT apply any force)

EZI-DOCK SYSTEMS LTD
Ezi-Flow CSV4
Pressure Clamp



CSV Active Red Toggle number 1


3A:

 The CSV4 active red toggle marked no. 1 should be positioned fully over to the left hand side behind the pressure clamp retaining dowel.

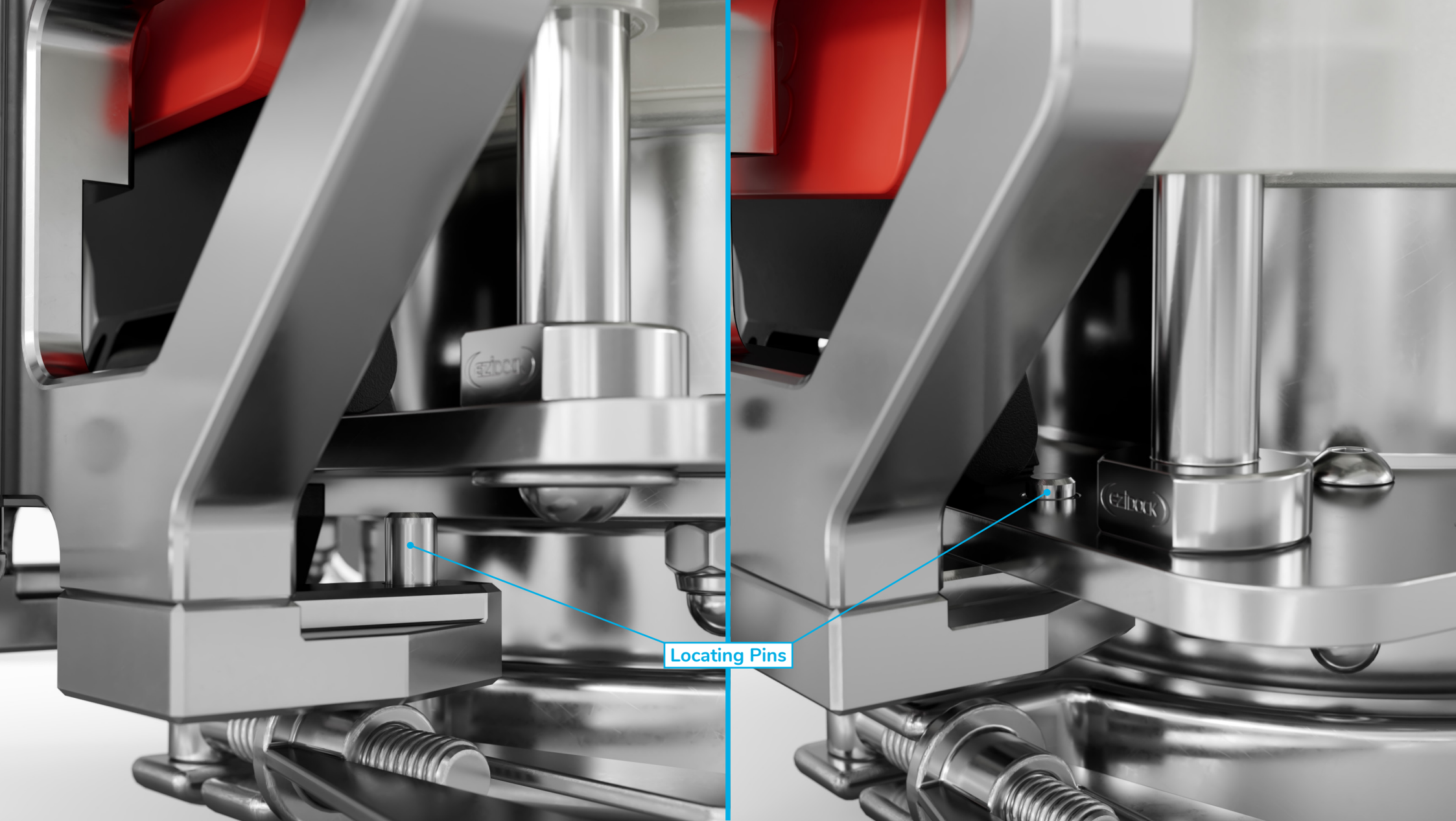


4:


Lower the pressure clamp side plate toggles simultaneously to evenly distribute pressure and compress the CSV4 active together.

 The Ezi-Flow CSV4 pressure clamp has been factory set and will be deliberately tight

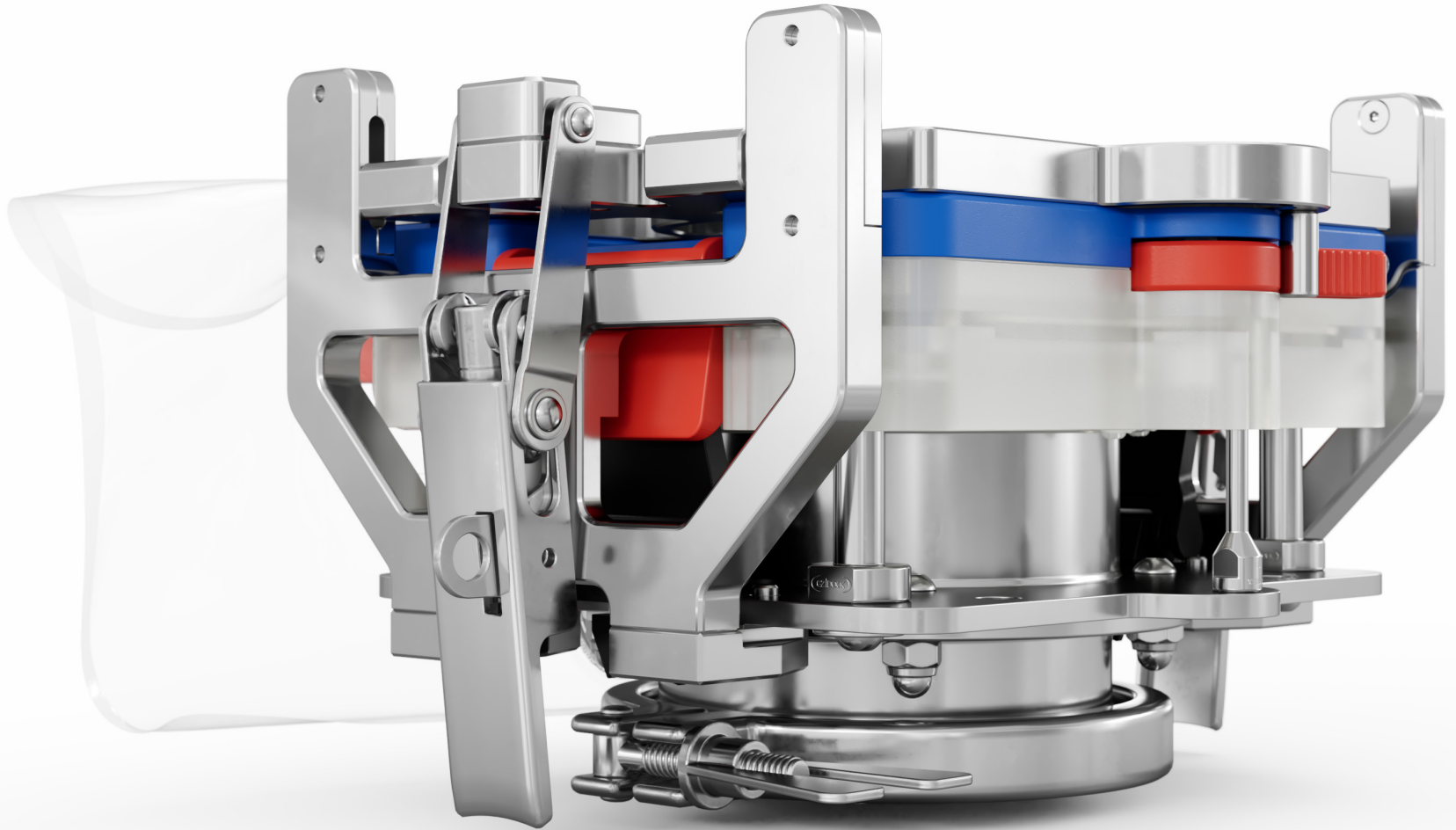
EZI-DOCK SYSTEMS LTD
Ezi-Flow CSV4
Pressure Clamp



4A:

 Ensure the locating pins on the bottom of the side plates are positioned in line with the locating holes on the CSV4 spigot plate.

EZI-DOCK SYSTEMS LTD
Ezi-Flow CSV4
Pressure Clamp



4B:

The pressure clamp should lock into place.

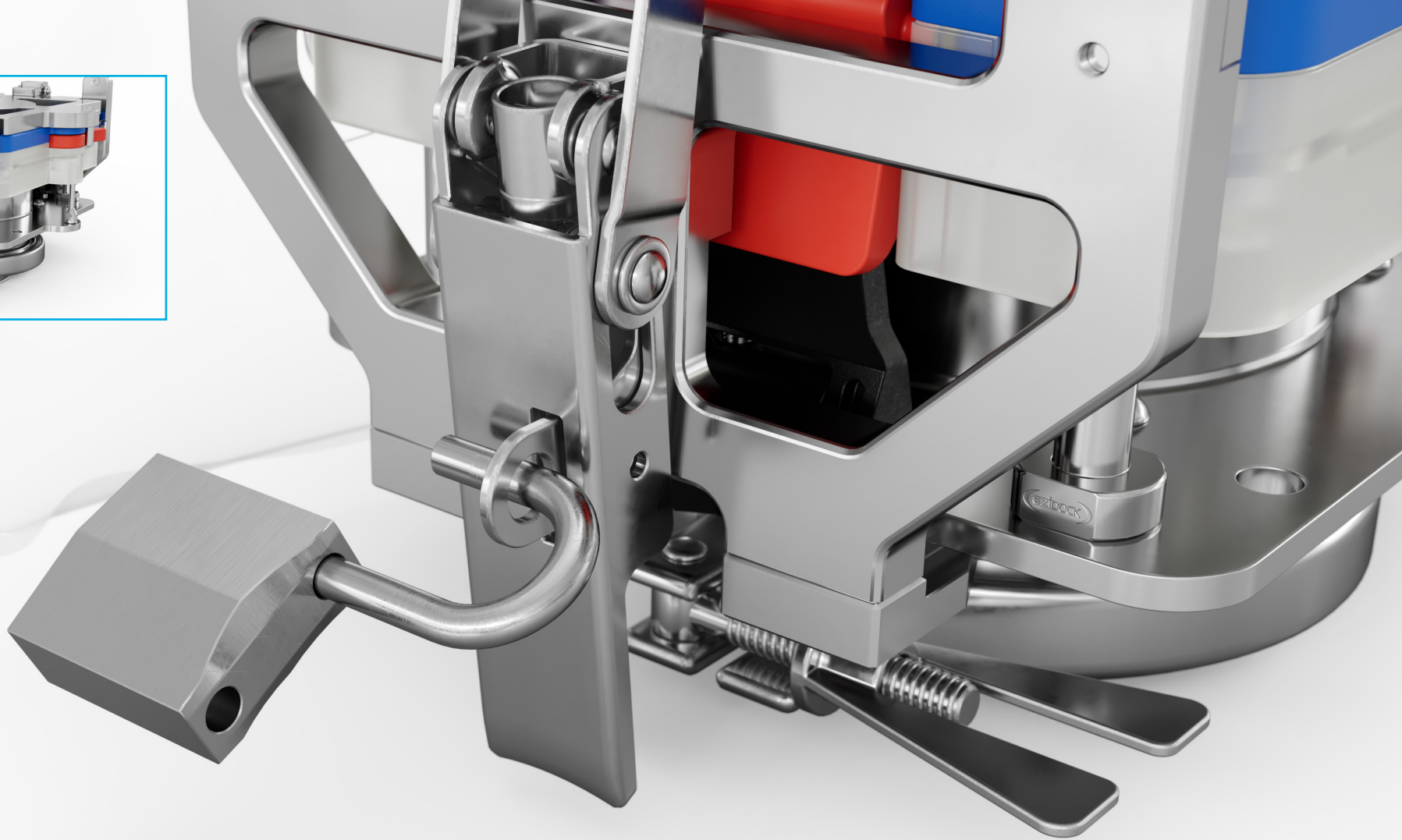
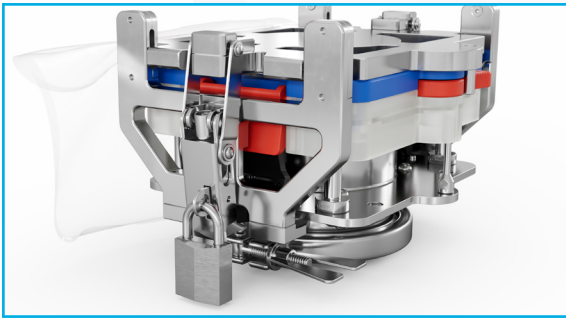
EZI-DOCK SYSTEMS LTD
Ezi-Flow CSV4
Pressure Clamp



5:

⚠ If necessary, the clamps on both sides can be adjusted with a flat bladed screwdriver as shown. Do not adjust without first consulting the Ezi-Dock technical team.

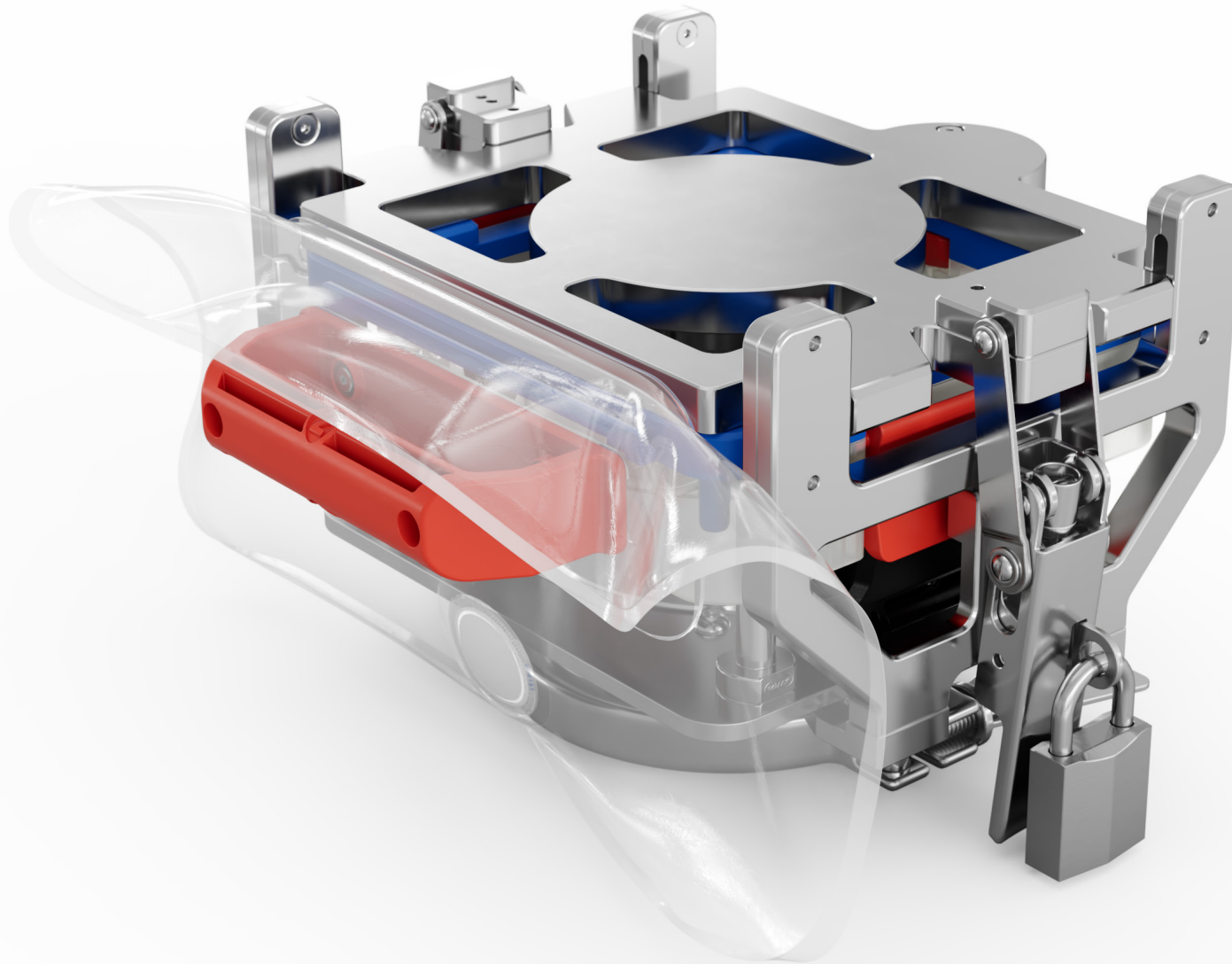
EZI-DOCK SYSTEMS LTD
Ezi-Flow CSV4
Pressure Clamp



6:

Padlocks can be inserted through the side plate toggle rings to prevent tamper and/or accidental release. (Optional)

EZI-DOCK SYSTEMS LTD
Ezi-Flow CSV4
Pressure Clamp



7:

The process is now complete. To remove the Ezi-Flow CSV4 Pressure Clamp simply reverse the operating steps.

EZI-DOCK SYSTEMS LTD
Ezi-Flow CSV4
Pressure Clamp



THE QUEEN'S AWARDS
FOR ENTERPRISE:
INNOVATION
2014



THE QUEEN'S AWARDS
FOR ENTERPRISE:
INNOVATION
2015



THE QUEEN'S AWARDS
FOR ENTERPRISE:
INNOVATION
2019

Ezi-Dock Systems Limited

Park Court, Park Lane Business Park, Kirkby in Ashfield,
Notts NG17 9GU United Kingdom

 Tel: **+ 44 (0) 1623 888 000**

 Email: **sales@ezidock.com**

 Web: **www.ezidock.com**