

# MobileCIPOne™ CLEANING IN PLACE (CIP) SYSTEM



The Mobile General Purpose Robust Sanitary Total Loss Cleaning In Place System for all sectors

## Overview

These mobile skid mounted systems provide a robust and repeatable method of cleaning process equipment with temperature controlled solutions and added chemicals.

Skids comprise all the necessary water storage tanks, heaters, pumps, valves, pipework and related components and instrumentation to deliver the required CIP cycle. Type, quantity and physical sizes of components are determined during the design phase of each project to suit the required application.

System construction and components are suitable for sanitary use in pharmaceutical, biotech, food, beverage and other hygienic applications.

Systems include a user-configurable recipe based control system to suit a wide range of applications and are pre-assembled and fully tested with operating utility supplies in our works to minimise risk and optimise installation and validation time on-site.

Systems comply with all applicable regulatory standards and are accompanied by a comprehensive suite of documentation covering all aspects of installation, operation and maintenance. Extended documentation packages can be supplied to meet specific validation needs.

## Applications

- ✓ Cleaning of Tanks
- ✓ Vessels
- ✓ Intermediate Bulk Containers (IBCs)
- ✓ Vats, Fermenters
- ✓ Mixers Processors
- ✓ Pipework Flexibles
- ✓ Transfer Line Valves
- ✓ Fluid Bed Dryers Mills
- ✓ Coaters Filters
- ✓ Pumps
- ✓ Dryers Tumblers
- ✓ Fillers
- ✓ and many more.

## Sanitary Construction

- ✓ Sanitary components with no threads and triclamp connections
- ✓ 316 Stainless Steel Sanitary Pipework, no dead legs, fully drainable, certificate of conformity.
- ✓ 304 Stainless steel framework
- ✓ Control and instrumentation to industry best practice
- ✓ Repeatable, reliable client configurable sequences

# MobileCIPOne™ DATASHEET

VERSION 4.0



## Welcome

Since our foundation in 1961, Suncombe has pioneered the development of innovative solutions for cleaning in place, GMP Washers, skids, tanks and vessels and bio-waste decontamination. The business continues to be privately owned and managed day to day by Dave Adams and Steve Overton.

Supporting Dave and Steve is a close-knit, dedicated, highly motivated and long-standing team encompassing a wealth of technical experience and knowledge in all relevant disciplines, including design, manufacture, testing, installation, validation, documentation and after-sales support. All of our work is carried out across our own facilities north of London near Stansted Airport.

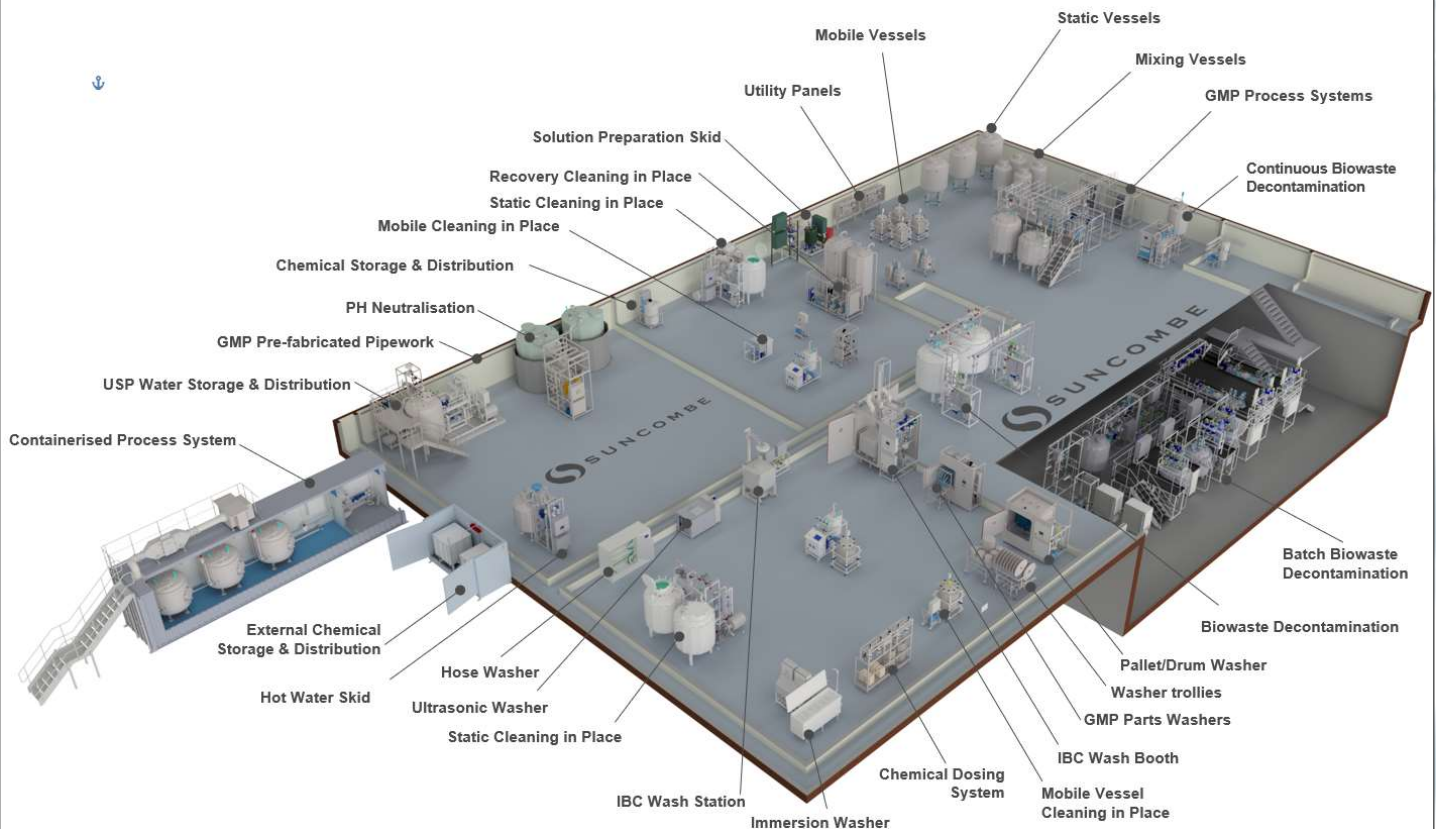
The team employ the very latest techniques, standards and best in class solutions. Having such a strong team allows us to offer the ability to carry out all of our work in-house, under our direct control

and quality management system. It also ensures that we own and preserve all the knowledge and experience gained with every project and allows us to offer continued support for all our installed systems throughout their lifetime.

## Our Clientele



## Our Equipment



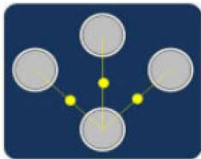
### Suncombe Ltd

Suncombe House, Unit B Woodside Industrial Estate, Dunmow Road, Bishop's Stortford, CM23 5RG, United Kingdom  
 T +44(0)20-8443-3454 F +44(0)20-8443-3969  
 E info@suncombe.com W www.suncombe.com

# MobileCIPOne™ DATASHEET

VERSION 4.0

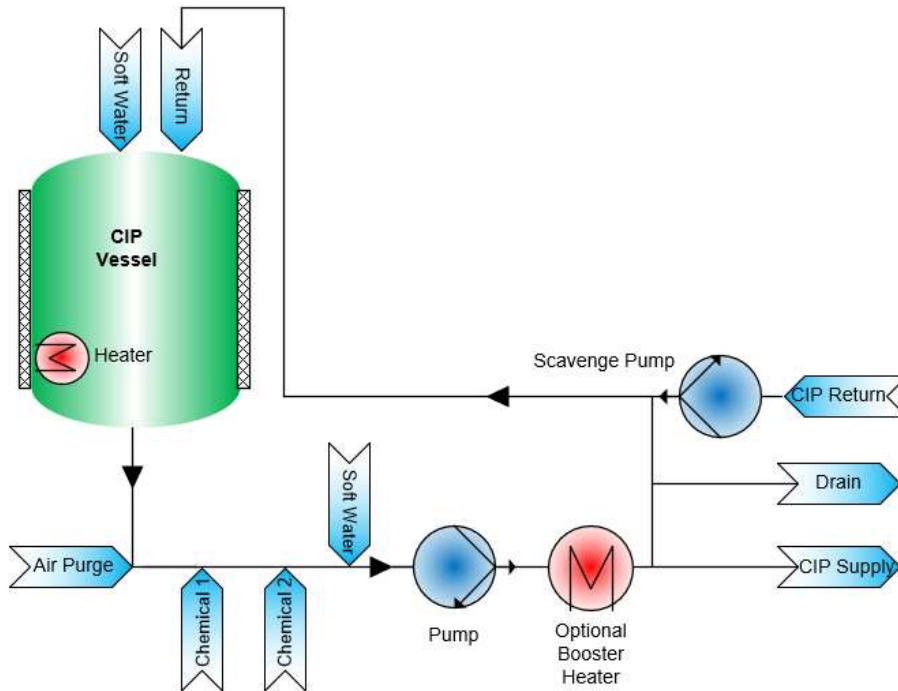


Key Features	Benefits
Sanitary 316L stainless steel construction and components	CIP fluids are maintained at a sanitary standards with butterfly valves and 2.2 material certification.
Variable Duty Delivery Pump	316L Stainless Steel Heavy Duty Sanitary Delivery Pump with Variable Speed Drive to allow speed control to vary the delivery flowrate and pressure from the recipe, complete with PID loop and automatic impellor casing drain valve
Siemens PLC and 12" colour HMI with options for additional HMIs	Control hardware is industry standard and supported worldwide by Siemens. Ethernet interface included for transfer of critical operating variables to other systems. Designed to enable integration to third party equipment or higher level control system. Versions also available with remote I/O for control by clients control system.
Suncombe SmartCIP™ software	Control software specification has been developed and proven over many years for CIP applications and includes a wide range of user or administrator configurable parameters to enable customised cleaning recipes, including water flow, pressure, time, temperature, chemical concentration and many more. Electronic CIP batch reports for local or network storage are possible. User interface screens and process visualisation is simple, intuitive, clear and comprehensive. Remote access options are possible if required.
CIP Tank	316L Stainless Steel Atmospheric tank, sanitary construction with riboflavin tests.
Single-pass or Recirculation options	CIP fluids can be immediately discarded to waste after use ("Single Pass") or may be recirculated to reduce overall water and energy consumption.
Electrical or Steam water heating options	Heating energy may be derived from most convenient and cost-effective source available.
Heated Solution Preparation	Heated solutions are batch made up in CIP Vessel. Option for In-Line Heating validated method
Continuous monitoring of key parameters	CIP process is highly reliable and repeatable.
Chemical Addition	Space on the unit for 2 x client supplied chemical drums. Option for additional chemicals.
In-line or batch chemical dosing	Chemical solutions can be batch made up in CIP tank/s or using optional In-Line Dilution method with flowmeter. Option for conductivity concentration verification.
Scavenge/Return Pump	Skid includes air handling scavenge pump to return CIP liquid
Plug 'n' Play	Fully integrated with comprehensive in-house testing to ensure fast start up on site
Skid is on castors ("mobile")	Location and relocation of CIP system is very flexible either by hand or using for forklift or pallet truck
CIP Distribution	<p>A single CIP outlet is included. Options available for up to 10 separate CIP outlets for feeding to different items to be CIP'ed. Each outlet can be a single or double valve for CIP isolation. Distribution can also be via flowplate/splitter panel.</p>  <p>Typical flowplate/splitter panel</p>
Covers	The systems are also available with stainless steel or thermoplastic covers
Air Purge	Includes air purge facility to evacuate all water from the CIP pipework
Fully Drainable	Automatic valves to fully drain entire skid including pump casing
Instruments	Sanitary instruments of Endress and Hauser or equivalent with full material and calibration certification.

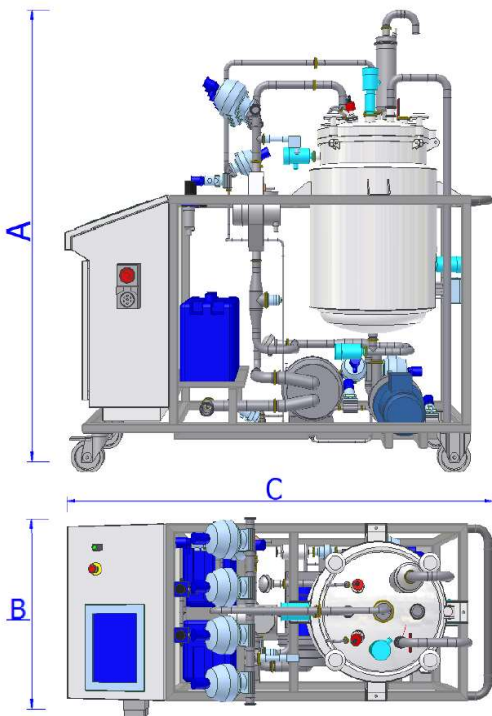
# MobileCIPOne™ DATASHEET

VERSION 4.0

Diagram



Layout Drawing



Dimensions

These are typical only and should be confirmed.

Part #	Vessel Capacity litres	Flowrate Litres per minute	Length mm	Width mm	Height mm
MobileCIPOne™ 60	150	0-60	1,750	850	2,000
MobileCIPOne™ 100	250	0-100	1,950	1,050	2,150
MobileCIPOne™ 150	350	0-150	1,950	1,050	2,450

Most common versions shown above. Other sizes are available.  
All Systems also available with 0, 1 or 2 vessels.

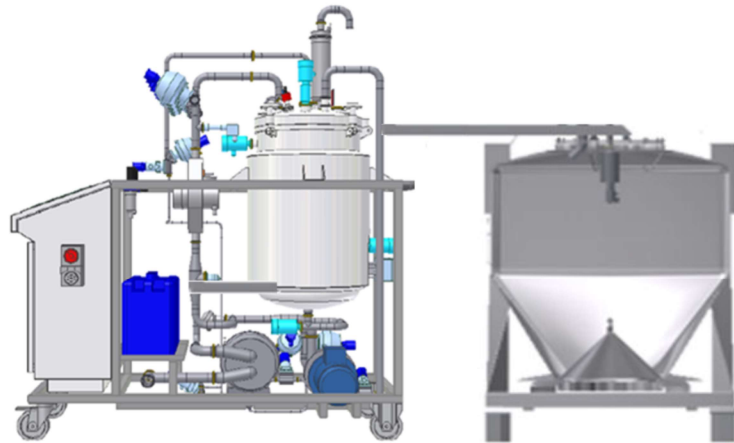
# MobileCIPOne™ DATASHEET

VERSION 4.0



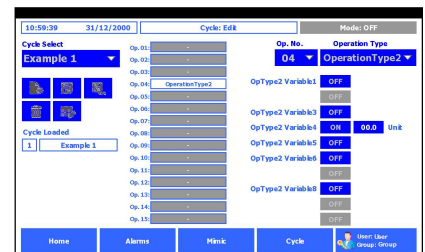
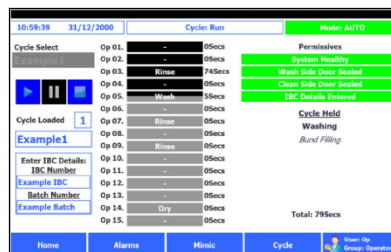
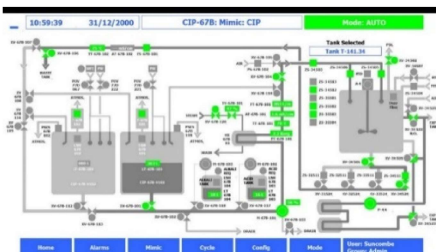
Typical MobileCIPOne™

IBC Washing Variant - With built in automatic lid positioning for Intermediate Bulk Containers (IBCs)



Typical MobileCIPOne™ Operator Interface HMI

Typical MobileCIPOne™ Operator Interface HMI Recipe Configuration



## Utilities

Water (Soft)	20 – 150 litres/min @ 1 bar (ideally as per system flowrate)
Compressed Air (internal regulator)	Minimal use @ 7bar
Air Purge (internal regulator and HEPA filter)	700 Slpm
Electricity	>12 kW 400Vac 3ph+n 50hz. Other voltages available to order
Heating	Electrical or steam - utility dependant on system duty
Drain	20 - 150 litres/min @ 1 bar (as per system flowrate)

## Control and Automation System

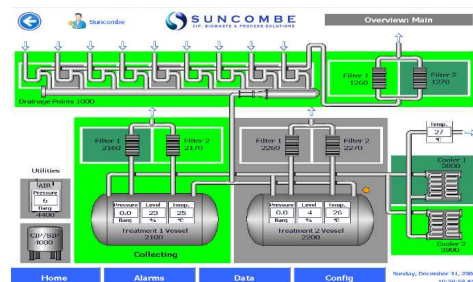
Renowned for their ease of operation and versatility, Suncombe systems are designed and manufactured for reliability, repeatability and longevity, whilst complying with the highest international regulatory standards. With dedicated in-house automation personnel for control design and software, Suncombe engineers have tremendous experience in incorporating a broad range of control solutions to suit your specific control requirements.

Developed to the GAMP 'V' model (Verification and Validation), system life cycle approach, which links the three main qualification activities (installation, operation and performance) back to the design process, the system software is produced in house by qualified software engineers, encompassing software development standards, quality control systems and change control during and post development.



## Standards and Guidelines

- ✓ GAMP Guidelines
- ✓ FDA 21CFR11 Compliance
- ✓ ASME BPE
- ✓ EU Machinery Directive
- ✓ EU Low Voltage Directive
- ✓ EU cGMP Guidelines
- ✓ EU EMC Electromagnetic Compatibility Directive
- ✓ IEC 61131 for PLCs
- ✓ EN 60204 Safety of machinery
- ✓ EN 60439 Low Voltage Switchgear
- ✓ CE and UKCA Marks



Typical Operator Interface



